



# EBENSBURG BULLETIN

Official Publication of Ebensburg Borough



## Lee Disposal Returns to Ebensburg

January 2012

### Ebensburg Borough Trash and Recycle Schedule

<b>JANUARY 2012</b> S M T W T F S 1 2 3 4 5 6 7 8 9 10 11 12 13 14 15 16 17 18 19 20 21 22 23 24 25 26 27 28 29 30 31 Recycling/Trash Pickup 3 & 4 Trash Only Pickup 10 & 11 Recycling/Trash Pickup 17 & 18 Trash Only Pickup 24 & 25 Trash Only Pickup 31	<b>MAY 2012</b> S M T W T F S 1 2 3 4 5 6 7 8 9 10 11 12 13 14 15 16 17 18 19 20 21 22 23 24 25 26 27 28 29 30 31 Recycling/Trash 1 & 2 Trash Only 4 & 9 Recycling/Trash 15 & 16 Trash Only 22 & 23 Trash Only 29 & 30	<b>SEPTEMBER 2012</b> S M T W T F S 1 2 3 4 5 6 7 8 9 10 11 12 13 14 15 16 17 18 19 20 21 22 23 24 25 26 27 28 29 30 Recycling/Trash 4 & 5 Trash Only 11 & 12 Recycling/Trash 18 & 19 Trash Only 25 & 26
<b>FEBRUARY 2012</b> S M T W T F S 1 2 3 4 5 6 7 8 9 10 11 12 13 14 15 16 17 18 19 20 21 22 23 24 25 26 27 28 29 Trash Only 1 Recycling/Trash 7 & 8 Trash Only 14 & 15 Recycling/Trash 21 & 22 Trash Only 28 & 29	<b>JUNE 2012</b> S M T W T F S 1 2 3 4 5 6 7 8 9 10 11 12 13 14 15 16 17 18 19 20 21 22 23 24 25 26 27 28 29 30 Recycling/Trash 5 & 6 Trash Only 12 & 13 Recycling/Trash 19 & 20 Trash Only 26 & 27	<b>OCTOBER 2012</b> S M T W T F S 1 2 3 4 5 6 7 8 9 10 11 12 13 14 15 16 17 18 19 20 21 22 23 24 25 26 27 28 29 30 31 Recycling/Trash 2 & 3 Trash Only 9 & 10 Recycling/Trash 16 & 17 Trash Only 23 & 24 Trash Only 30 & 31
<b>MARCH 2012</b> S M T W T F S 1 2 3 4 5 6 7 8 9 10 11 12 13 14 15 16 17 18 19 20 21 22 23 24 25 26 27 28 29 30 31 Recycling/Trash 6 & 7 Trash Only 13 & 14 Recycling/Trash 20 & 21 Trash Only 27 & 28	<b>JULY 2012</b> S M T W T F S 1 2 3 4 5 6 7 8 9 10 11 12 13 14 15 16 17 18 19 20 21 22 23 24 25 26 27 28 29 30 31 No Pick-Up July 4th Recycling/Trash 3 & 5 Trash Only 10 & 11 Recycling/Trash 17 & 18 Trash Only 24 & 25 Trash Only 31	<b>NOVEMBER 2012</b> S M T W T F S 1 2 3 4 5 6 7 8 9 10 11 12 13 14 15 16 17 18 19 20 21 22 23 24 25 26 27 28 29 30 Recycling/Trash 6 & 7 Trash Only 13 & 14 Recycling/Trash 20 & 21 Trash Only
<b>APRIL 2012</b> S M T W T F S 1 2 3 4 5 6 7 8 9 10 11 12 13 14 15 16 17 18 19 20 21 22 23 24 25 26 27 28 29 30 Recycling/Trash 3 & 4 Trash Only 10 & 11 Recycling/Trash 17 & 18 Trash Only 24 & 25	<b>AUGUST 2012</b> S M T W T F S 1 2 3 4 5 6 7 8 9 10 11 12 13 14 15 16 17 18 19 20 21 22 23 24 25 26 27 28 29 30 31 Trash Only 1 Recycling/Trash 7 & 8 Trash Only 14 & 15 Recycling/Trash 21 & 22 Trash Only 28 & 29	<b>DECEMBER 2012</b> S M T W T F S 1 2 3 4 5 6 7 8 9 10 11 12 13 14 15 16 17 18 19 20 21 22 23 24 25 26 27 28 29 30 31 No Pick-Up December 25 Recycling/Trash 3 & 4 Trash Only 11 & 12 Recycling/Trash 18 & 19 Trash Only 25

Ebensburg Borough Residents Trash / Recycling Pickup Schedule for 2012 / 2013 / 2014

collection days of the month. THE 1<sup>ST</sup> RECYCLING DAY IS THE FIRST WEEK THAT CONTAINS BOTH GARBAGE COLLECTION DAYS (Tuesday and Wednesday). In other words, January the first recycling days are Tuesday, January 3<sup>rd</sup> and Wednesday, January 4<sup>th</sup>. In February, the first recycling days are Tuesday, February 7<sup>th</sup> and Wednesday, February 8<sup>th</sup>. There is no recycling on Wednesday, February 1<sup>st</sup> because that is not the first week of the month to contain BOTH days.

## Recycling Procedures

Recyclables are now being handled differently than a few years ago. In the past, Lee Disposal separated the recyclables at the curb and placed them in different bins. Now, all recyclables are co-mingled in the same collection truck (a different truck than that used for garbage collection), and then separated at the Blair County Resource Recovery Center. Please use the blue recycle bins provided by the Borough. You can pick up recycling bins at the borough office during business hours.

Items approved for recycling include clear, brown and green glass from packaging of food and beverages only; plastic bottles and jugs designated with the numbers 1 and 2; and all tin and aluminum cans. Do not place the items in plastic bags, but rather co-mingle all items in a single blue recycling bin. Newspapers only (not magazines, white paper or any other paper) should be bundled with string or twine. DO NOT mix newspapers with other recyclables. If you prefer, you can take your recyclables to the county's collection station along Manor Drive.

Lee Disposal has once again won the contract for residential garbage collection and recycling in Ebensburg Borough, and began providing service on January 1<sup>st</sup>.

There are certain items that are not permitted to be placed out for collection. The garbage collector cannot accept building rubbish from building construction or reconstruction; industrial refuse; tree trimmings, hedge clippings or grass; stones, bricks or earth; plaster, concrete, paint, and general building materials; automobile parts, batteries or tires. If you have any questions about garbage collection or recycling, or you have a problem to report, call: **Lee Disposal direct at 814-886-2801.**

CURBSIDE RECYCLING is conducted on the 1<sup>st</sup> and 3<sup>rd</sup> garbage

### Inside this issue:

<i>Sewage Testing</i>	2
<i>Swimming Pool Rates</i>	3
<i>Sidewalk Improvements</i>	4
<i>Borough Projects</i>	5
<i>YPCC Programs</i>	6
<i>Visioning Process</i>	7
<i>Event Calendar</i>	8

### Borough Council

Doug Tusing, President  
Deborah Nesbella, V. President

Susan Barber  
Terry Illig  
Dave Kuhar  
Joe Lutz  
Cecilia Houser  
Mario Bianucci  
(Junior Councilor)

Mayor Randy Datsko

Ebensburg Borough  
300 West High Street  
Ebensburg, PA 15931  
(814) 472-8780  
[www.ebensburgpa.com](http://www.ebensburgpa.com)

# SEWAGE TESTING

Residents are reminded that Ebensburg Borough is continuing a DEP-required testing of residential and commercial sewage systems. The tests are intended to detect any connections that are allowing infiltration into the sewage system.

Infiltration is caused by sources of stormwater being illegally discharged into the sanitary sewer system. These sources can be downspouts, driveway drains, footer drains, and leaking service laterals. Borough crews will be smoke-testing sections of town. Smoke is pumped into the sanitary sewer system under pressure and then rises out of any illegal tap identifying the locations of any drains, downspouts and leaks. Property owners that have any such illegal sources of infiltration will be required to pay to have corrections made.



The smoke may on occasion enter buildings. That could happen if your sewage traps are empty or lacking. The smoke is non-toxic and leaves no residue. We will try our best to notify property owners in advance of any testing in your area. You will want to watch the local newspaper for any notices. The testing will occur in a specific section of town each year over the next five years.



## Water Project

The Ebensburg Municipal Authority will soon begin work on a water system improvement project that will replace portions of the water distribution system, upgrade the water treatment plant; replace all customer water meters, and improve the remote water pumping stations. The cost of the project is just over five million dollars and is being paid for with a rate adjustment already implemented last year.

## Website Enhancements

Got questions? Ebensburg's website has the answers! Don't forget to check the website as a handy source of information for borough events; information about the YPCC, swimming pool or tennis center; and current updates about borough government such as Council's meeting agenda or ordinance information. Also available are FAQ's for water and sewage, and online applications and forms.

Ebensburg Borough's website is updated daily.

[www.ebensburgpa.com](http://www.ebensburgpa.com)

## 2012 Budget

Ebensburg Borough Council adopted its 2012 operating budget in December. The nearly \$4.5 million budget contained no tax increase, and all rates and fees remain the same. The budget allows for continued improvements throughout Ebensburg including sidewalks, street paving, additional entrance signs, two new trucks, new playground equipment at the pool and Lake Rowena, and park improvements.

# BOROUGH POOL IMPROVEMENTS COMPLETED

With the exception of the landscaping, the swimming pool improvement project has been completed. The new lawn and landscaping will be completed in time for opening day on Saturday, May 26th.

The pool was closed the entire 2011 season for this extensive renovation. Borough Council believes that patrons will find the temporary inconvenience to be well worth it!

As a result of this project, the 70 year old swimming pool is now in total compliance with current codes. All drains have been replaced, filtrations systems were modernized, handicap access was provided, and leaks were stopped. Water slides and play structures were installed. The new pool is heated. The concrete deck was replaced, and the interior of the pool was tiled instead of painted. The new pool even features deck chairs.



Patrons will not recognize the interior of the bathhouse. Privacy has been provided for all restroom and changing facilities, and it is no longer necessary to pass through the bathhouse facilities to enter and exit the pool.

***Fund Drive mailings were sent to residents in order to contribute to this very worthwhile project. You can also donate online at [www.ebensburgpa.com](http://www.ebensburgpa.com).***

<b>Resident Rates</b>	<b>January 23, 2012 and after</b>
Individual (19 yrs. - 64 yrs. old)	\$120.00
Individual - Child (4 yrs. - 18 yrs. old) / Senior (65 yrs. +)	\$100.00
2 Person Pass	\$160.00
3 Person Pass	\$185.00
4 Person Pass	\$205.00
5 Person Pass	\$225.00
Additional Dependents	\$20.00
Nanny/ Babysitter (must be bought in conjunction with a family membership)	\$25.00

<b>Non-Resident Rates</b>	<b>January 23, 2012 and after</b>
Individual (19 yrs. - 64 yrs. old)	\$150.00
Individual - Child (4 yrs. - 18 yrs. old) / Senior (65 yrs. +)	\$130.00
2 Person Pass	\$185.00
3 Person Pass	\$205.00
4 Person Pass	\$225.00
5 Person Pass	\$245.00
Additional Dependents	\$20.00
Nanny/ Babysitter (must be bought in conjunction with a family membership)	\$25.00

## POOL DATES

Grand Opening:  
**May 26, 2012**

## POOL HOURS

**MONDAY - SATURDAY**  
12:00 p.m. - 8:00 p.m.

**SUNDAY**  
12:00 p.m. - 6:00 p.m.

<b>Daily Admission Rates</b>	<b>Resident</b>
Adult (19 yrs. - 64 yrs. old)	\$6.00
Child (4 yrs. - 18 yrs. old)	\$4.00
Senior (65 yrs. +)	\$4.00
Twilight (After 6:00 PM)	\$4.00



# SIDEWALK IMPROVEMENT UPDATES

Sidewalk improvements in Ebensburg continued during 2011, and will start back up again during 2012. Last year we completed new sidewalks and curbs along East High Street and Rowena Drive. The project occurred later in the year than normal, which did not allow time for installation of the new streetlights and signage. That work will be completed this spring as soon as weather allows.

There is one relatively small sidewalk project planned for 2012, followed by an extensive project in 2013.

This year we hope to complete sidewalk improvements in the 100 and 200 blocks of West Sample Street and West Crawford Street, and the 200 block of North Cherry Street. Meetings have already been conducted with the affected property owners to explain the project.

Plans are also underway for sidewalk improvements along West High Street between Beech Street and Sheetz. That project will not occur until 2013, but meetings with affected property owners will begin later this year. We also intend to extend sidewalks further down Rowena Drive to Lake Rowena.

## REMINDER – Property owners are required to obtain a permit BEFORE.....

1. Erecting any signs
2. Installing a new driveway or cutting a curb
3. Erecting any fences
4. Constructing a garage or erecting a shed (even a kit)



In most cases, it will not be necessary to acquire a building permit, but make sure first! At a minimum, zoning approval IS REQUIRED! Please check with the borough office before beginning any project.

## Shoveling Sidewalks

Keeping our sidewalks free of ice and snow is the neighborly thing to do, and it's the law.



For your own benefit and to help your neighbors, people pushing strollers or using wheelchairs, and the many people in Ebensburg who walk, please do your part.

## Would You Like To Volunteer?

Ebensburg Borough hosts a variety of events each year and could use your help!

ART IN BLOOM ART SHOW

WHEELS & WINGS

EBENSBURG HOMECOMING

CONCERTS IN THE PARK

EBENSBURG POTATOFEST

DICKENS OF A CHRISTMAS



**Sign up Today!**

(814) 472-8780

or

[eburg@ebensburgpa.com](mailto:eburg@ebensburgpa.com)

[www.ebensburgmainstreet.com](http://www.ebensburgmainstreet.com)



# Entrance Signs

Thanks to the Ebensburg Rotary Club, a new "Welcome to Ebensburg" sign has been erected at the east entrance to town near Lake Rowena. That area will be landscaped as soon as weather allows.

The design of the sign reflects the "second empire" architectural style of the Cambria County Courthouse. Its construction even includes the limestone quoins to match the courthouse.

Matching signs are planned for five other entrances to Ebensburg. If your community organization is interested in contributing to one of the new signs, contact the borough office for additional details.



## Prave Street Improvements

A project is planned to improve the appearance of the south entrance to town in the area of Prave Street. This project involves the designation of bicycle lanes on both sides of Prave Street, new trees, additional stormwater controls, and improvements to the parking lot at the Ghost Town Trail. The cost of these improvements is being underwritten by the Ebensburg Area Business Commission.



## Veterans Park To Be Rededicated

The refurbishing of the county-owned Veterans Park next to the former jail has been completed, and what a difference! The park, originally built in 1913, was in desperate need of improvements.

The memorial plaques around the monument were badly tarnished and nearly illegible. The plaques honor those that served in very early wars such as the Revolutionary War, Civil War and War of 1814. The Civil War "armed sentinel", the statute guarding the obelisk, was a tarnished green. MEC, a Nanty Glo based company, was hired to remove the 25 memorial plaques and the statute and completely refurbish them.

The centerpiece of the new park is the flag park honoring those who have served in each branch of the military. Five new service flagpoles were erected to form a semi-circle around a new U. S. flag. Borough Council President Doug Tusing said, "We wanted the new park to honor all that currently serve or have served in any branch of the military, whether during peacetime or war, or at home or abroad."

Streetlights were installed throughout the park, small garden areas were planted, an interpretive sign was added explaining the history of the park, and new trees were planted. New donated benches were placed throughout the park.

The park improvement project was a joint undertaking of Cambria County, Ebensburg Borough, American Legion Post #363 and VFW Post #4963.

*A rededication of the park is planned for Memorial Day. A ceremony including patriotic music and a flag raising will be part of the program. Watch for announcements for the upcoming event, and come out and help us honor all of those who have served our Country.*

\* **SPECIAL** \*

PURCHASE 3 MONTHS & RECEIVE THE 4TH FREE!

PURCHASE 10 MONTHS AND RECEIVE 2 FOR FREE!

Regular exercise, proper nutrition, stress management and other good lifestyle habits are more important to you now than ever before.

At the same time, it is more difficult to find the time in today's fast-paced society to focus on your physical fitness and wellness. The Ebensburg Borough Health & Wellness Facility is ideal for those who can devote three to five hours a week to improving their physical fitness because it offers first-rate equipment in an intimate state-of-the-art facility at very low fees.

**Monthly Gym Membership Fees:**

Single/Adult.....	\$22.00
Seniors (55 yrs.+ ).....	\$15.00
Students.....	\$15.00

**Family Rate:**

2 Adults + 1 Student: \$45  
(\$10 for each additional student)

### YPCC Aerobic Class Schedule

The following is a schedule of the "Fit Happens" aerobic classes held at the Young Peoples Community Center. These classes are in addition to your Fitness Center membership. If you have any questions concerning any of these classes, please see the brief class descriptions below or call the recreation office, (814) 472-4277, for more details. Why not try an aerobic class today and add another dimension to your fitness routine? (Schedule subject to change without notice-monthly schedules available at front desk.)

	MONDAYS	TUESDAYS	WEDNESDAYS	THURSDAYS	FRIDAYS	SATURDAYS
9:00 AM						Burn & Firm
12:15 PM		Butts n' Bellies		Butts n' Bellies		
4:15 PM	Advanced Weight Training	Advanced Weight Training	Advanced Weight Training	Advanced Weight Training		
5:30 PM		Burn & Firm	FIX n' MIX	Burn & Firm		
7:00 PM		ZUMBA		ZUMBATONIC		
7:30 PM	FIX n' MIX			FIX n' MIX		

**INSTRUCTORS:**

Lisa Parkin  
Ashley Archangelo  
Stacey Sweeney

**ADVANCED WEIGHT TRAINING:** Total body workout for all fitness levels, combining a high/low aerobic workout with traditional step aerobics and weight training.

**BURN & FIRM:** A variety of high impact step aerobics combined with total body strengthening and mat exercises.

**BUTTS N' BELLIES:** Burn serious calories by way of this high energy workout with target toning segments.

**FIX N' MIX:** Challenge yourself with this intense exercise, combining a high aerobic workout with aggressive weight and strength training. Also includes a mixture of strengthening and stretching exercises concentrating on the muscles of the abdominal area, lower back, hips, and buttocks, designed of fitness to improve posture, balance, and flexibility.

**ZUMBA:** The routine features interval training sessions where fast and slow rhythms and resistance training are combined to tone and sculpt your body while burning fat. Add some Latin flavor and international zest into the mix and you've got ZUMBA.

**ZUMBATONIC:** The goal of this program is to help teach young children the importance of a healthy lifestyle, as well as exercise. Combines a warm-up, dance instruction, cool down and games. Participants will practice counting, working on colors and letters, as well as memory.



# VISIONING PROCESS

Ebensburg Borough officials are turning to residents and business owners for their thoughts and ideas on ways to improve Ebensburg. Borough Council is seeking volunteers to participate in a series of "visioning sessions" to share ideas for future projects and to prioritize a list of initiatives.

"We have a long list of projects we would like to undertake," said Mayor Randy Datsko. "We want some input on prioritizing those projects, and want to learn what is most important to the residents."

Officials expect that the subjects to be discussed might include the arts, youth participation, volunteer recruitment, future sidewalk projects, community image, recreational opportunities, downtown occupancies, historic designation, infrastructure, events, safety, transportation, parking, values and attitudes, and any topic that participants wish to discuss and explore.

"We take on a number of new projects every year in Ebensburg based solely upon what we feel is important," said Borough Manager Dan Penatzer. "This visioning process will allow us to pause and make sure that we are focusing our efforts on what the group sees as its priorities."



Officials expect the list of ideas will be a long one. Therefore, part of the visioning process will be to prioritize the wants and desires of everyone. Council is seeking a group of volunteers that is representative of the entire community including professionals and non-professionals, young and old, business owners and homeowners.

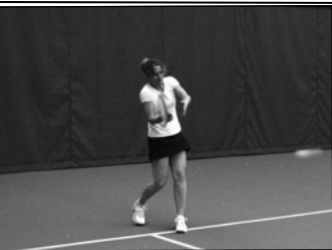
Staff has already taken initial steps toward that process. During November, staff met with representatives of Derck & Edson, a firm that specializes in land planning and site design of downtown facilities, and The Gulatto Group, who provide technical assistance and funding alternatives for community development projects.

Long-term projects under consideration include an occupancy for the front residence portion of the former county prison, business incubator possibilities within the Barnes building, conversion of upper floors of several old buildings to residential use, residential development of the former middle school, and parking alternatives for the downtown.

The consulting firms will develop ideas and suggestions, and return in the spring to meet with the committee to help establish priorities. The group will then share ideas and form an action plan for achieving the agreed upon goals.

Those participating will likely be asked to attend only two or three meetings, and their work will be done. It is not a long-term commitment, and will not require a great deal of time.

**To volunteer, contact the borough office at 814-472-8780 or [eburg@ebensburgpa.com](mailto:eburg@ebensburgpa.com).**



The winter tennis season is in full swing at the Ebensburg Tennis Center. If you are looking to tune up your game or just get started, the center offers individual and group lessons by USPTA certified professional Jamie Taylor.

The tennis center offers court rental for play on the indoor and outdoor courts. The center is open for member and non-member play.



**Single - \$150.00**

**Family - \$195.00**

**Junior - \$60.00 (17 and under)**

**\*Out of Town Membership - \$65.00 Single**

**\*Out of Town Membership - \$115.00 Family**

*\*Out of town memberships are for those who live 40 miles away from the center.*



Tennis memberships at the Ebensburg Tennis center will provide you with 24-hour access to the facility and an online court reservation book.

Listed on the left are membership costs; memberships are based on an annual fee.

PRSRT STD  
U.S. POSTAGE PAID  
ALTOONA, PA  
PERMIT #150

# Ebensburg Community Events

## **Wine Time in the Mainline**

*Sponsored by Ebensburg Rotary Club*  
March 17th, 1pm - 4pm & 5pm - 8pm  
Young Peoples Community Center

## **Farmer's Market\***

Every Saturday, 9am - 12pm  
July 28th - September 22nd  
Penn Eben Park

## **14th Annual 'Art in Bloom' Spring Art Show\***

Saturday, April 28th, 12pm - 6pm &  
Sunday, April 29th, 11am - 4pm  
Cambria County Courthouse

## **HeartChase**

*Hosted by the American Heart Association*  
April 28th, 9am - 11am  
[www.heartchase.org](http://www.heartchase.org)  
Young Peoples Community Center

## **8th Annual 'Wheels & Wings'\***

Thursday, June 21st, 5pm - 10pm  
Downtown Ebensburg

## **Downtown Shutdown\***

*Presents 'Midnight Special'*  
Friday, July 27th, 8pm - 11pm  
Center of Downtown Ebensburg

## **Ebensburg Homecoming\***

Saturday, July 28th, ALL DAY  
Ebensburg area & Lake Rowena

## **Concerts in the Park\***

August 3rd, 10th, 17th, 24th, 6pm - 9pm  
Penn Eben Park

## **5th Annual 'Shots & Stogies' Golf Tournament\***

Friday, August 31st  
Ebensburg Country Club

## **21st Annual PotatoFest\***

Saturday, September 29th, 9am - 5pm  
Downtown Ebensburg

## **3rd Annual Ebensburg Turkey Trot**

*Hosted by Ebensburg Area Running Club*  
Thursday, November 22nd  
[www.ebensburgrunners.org](http://www.ebensburgrunners.org)

## **7th Annual Dickens of a Christmas\***

Friday, November 30th - December 2nd  
Downtown Ebensburg

*\*Sponsored by Ebensburg Main Street Partnership  
& Ebensburg Area Business Commission*

**[www.ebensburgmainstreet.com](http://www.ebensburgmainstreet.com)**