

## S2.01



PRODUCED BY AN AUTODESK STUDENT VERSION

PRODUCED BY AN AUTODESK STUDENT VERSION

Pet Waste Station w/ Sign

Model: 135-1003

Installation Instructions



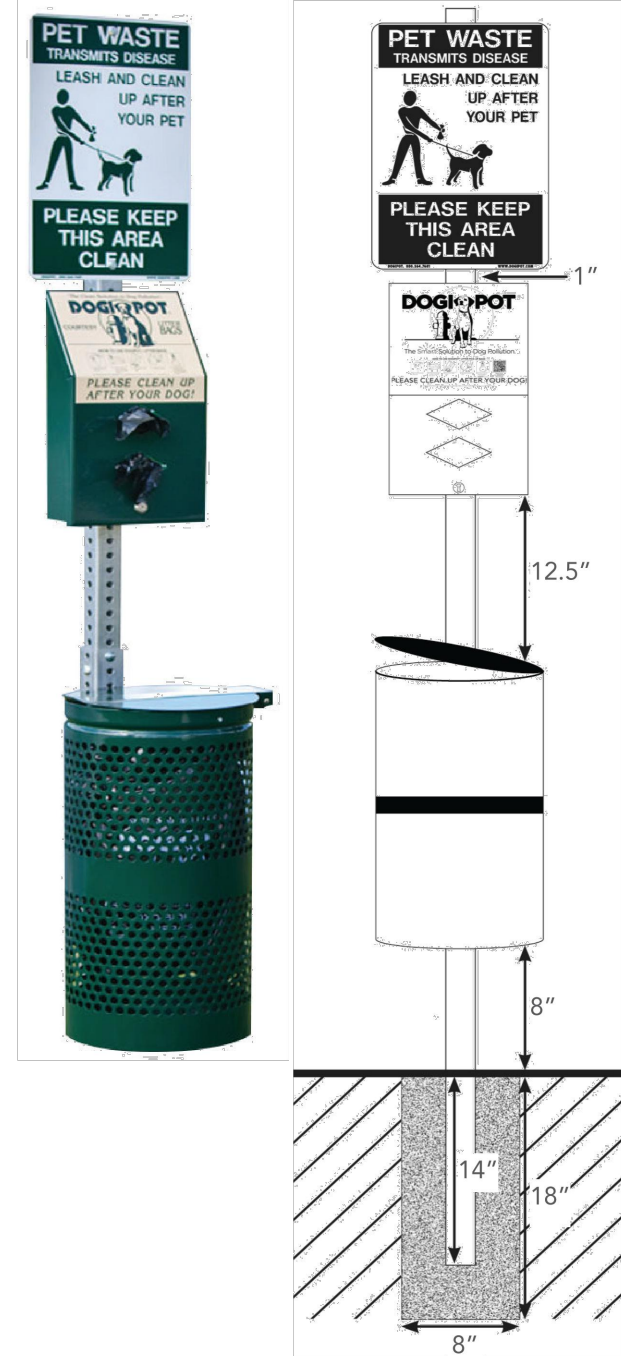
1. Select a good visible spot in your community or park where you want to install the Pet Waste Station
2. Prior to installation, remove the 1 3/4" x 1 3/4" x 4" portion of the mounting post from the 2" x 2" x 4" portion of the mounting post before cementing. **Insert the larger portion of the mounting post (2" x 2" x 4") approximately 14" into an 18" deep by 8" diameter hole filled with a 40 lb. bag of "ready to use" concrete mix.** To stabilize the post while cementing, place a rod, bolt or other device through the two bottom holes, prior to inserting into the ground and cementing. Level the post in a straight vertical position and let concrete dry for at least 12 hours.
3. After the concrete is dry, insert the smaller portion of the post (1 3/4" x 1 3/4" x 4") into the larger cemented portion of the post (2" x 2" x 4") until the first 4 holes are lined up between the two posts. Use two (2) carriage bolts, washers and locknuts to fix the telescopic post in position. The upper bolt in the top overlapping hole, pointing from right to left and the lower bolt in the bottom overlapping hole, pointing from front to back. The total height above ground with both parts should now be approx. 6' 6".
4. Start by installing the Pet Waste Station on top of the 1 3/4" post, with the upper hole matching the most upper hole in the square post using the enclosed 2 1/2" bolts, washers and locknuts. Continue installing the Pet Waste Bag Dispenser according to
5. Install the Steel Trash receptacle through the pre-drilled top oval holes in the back wall of the receptacle and through the square post with the remaining bolts, washers and locknuts, using the 2-3/4 bolt on top and the 2-1/2 bolt below. **The upper edge of the trash receptacle must be approx. 12 -1/2 below the lower end of you Aluminum Bag dispenser so that the lid may completely open.** The Upper back wall of the trash receptacle is supposed to touch the head of the lower post carriage bolt, which creates some space between the post and the receptacle, allowing the receptacle lid to open from left to right, without touching the post.
6. Insert one of the enclosed Pet Waste Bags into the trash receptacle, folding it over the interior retainer bands. As with any powder coated steel product constantly exposed to the elements, proper installation and general maintenance will help prevent and minimize corrosion and expand the life of the steel trash receptacle.
7. ENJOY WATCHING PET OWNERS PICK UP AFTER THEIR DOGS!

\*Subject to change without notice

Pet Waste Station w/ Sign

Model: 135-1003

Specifications



Product Details:

Mounting Hardware:	<b>Aluminium Pet Waste Sign</b> <ul style="list-style-type: none"><li>• 2 Tap bolts - 2-1/2 x 1/4</li><li>• 2 Washers</li><li>• 2 Locknuts</li></ul>
Keys:	2 for front access Dispenser panel, installed.
Bags:	2 Rolls - 200 count
Steel Trash Receptacle:	<ul style="list-style-type: none"><li>• 10 Gallon</li><li>• With attachable lid and trash liner bag retainer bands, with mounting hardware:</li></ul> <ul style="list-style-type: none"><li>1 - Bolt - 2-1/2" x 1/4"</li><li>1 - Bolt - 2 3/4" x 1/4"</li><li>1 - Washer</li><li>1 - Locknut</li></ul>
Trash Can Liner Bags:	1 - box, 50 count, included.
Total Ship Weight:	45 lbs

\*Subject to change without notice

Pet Waste Station Sign

Model: 135-1003

Specifications



Product Details:

Dimensions:	18" h x 11.5" w
Weight:	1.35 lbs
Coatings	<ul style="list-style-type: none"><li>• 14 gauge reflective aluminium</li><li>• Forest Green on white.</li></ul>

\*Subject to change without notice

Pet Waste Bag Dispenser

Model: 135-1003

Specifications



Product Details:

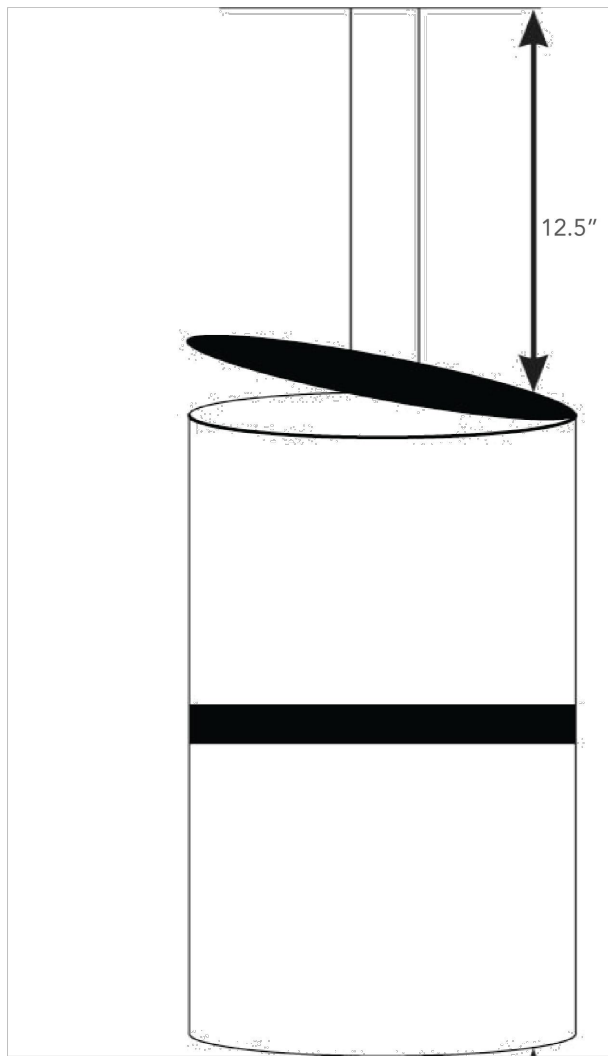
Dimensions:	15.5" h x 9.4" w x 3.25" d
Weight:	7 lbs
Bags:	400 bag capacity
Coatings:	<ul style="list-style-type: none"><li>• 12 gauge powder coated forest green aluminium</li><li>• Two diamond shaped bag dispenser slots</li><li>• Front locking access panel</li><li>• Clearly posted instructions</li></ul>

\*Subject to change without notice

Pet Waste Station Trash Receptacle

Model: 135-1003

Specifications



Product Details:

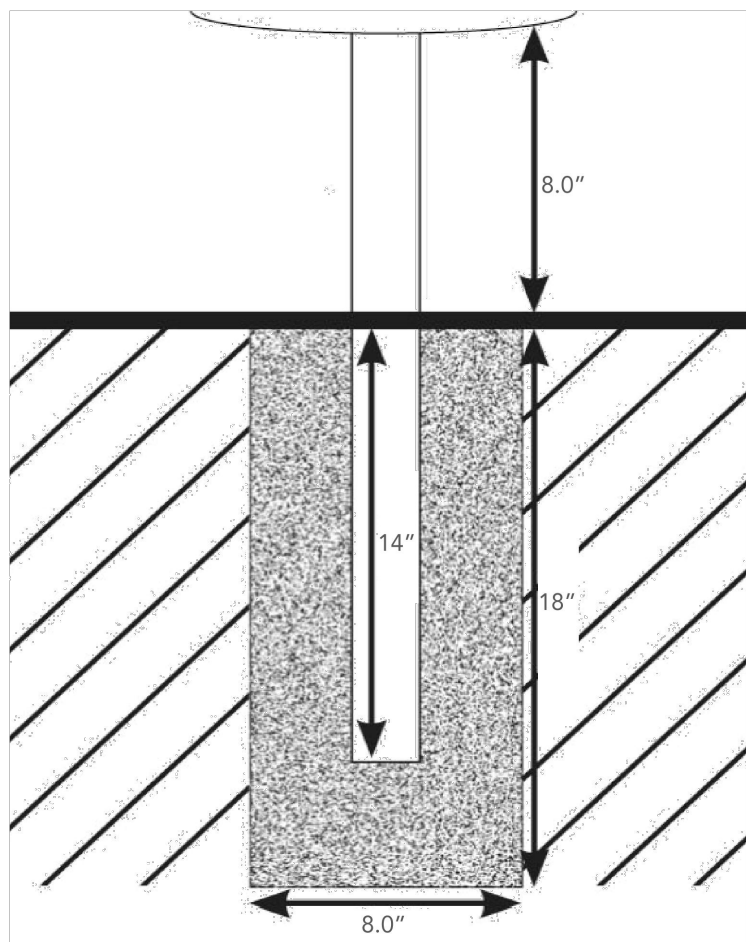
Dimensions:	23" h x 11.5" diameter
Weight:	14.6 lbs
Bags:	One (1) box 50 count, included.
Coatings:	<ul style="list-style-type: none"><li>16 gauge powder coated forest green steel</li><li>• 10 gallon capacity with interior trash liner bag retainer bands</li><li>• Attached stainless steel hinged lid</li></ul>

\*Subject to change without notice

Pet Waste Station Mounting Post

Model: 135-1003

Specifications



Telescopic Galvanized Steel Mounting Post Details:

Dimensions:	2" x 2" x 8'
Construction:	11 gauge galvanized steel
Weight:	15 lbs
Total height from above ground:	6' 6"
Space between dispenser and sign:	1.0"
Space between receptacle and dispenser:	12.5"
Space between ground and receptacle:	8.0"
Hole:	<ul style="list-style-type: none"><li>• D: 18.0" x W: 8.0"</li><li>• Fill with 40 lbs. "ready to use" cement</li></ul>

\*Subject to change without notice

Lake Rowena Park

Ebensburg, PA  
Cambria County, PA

COMPANY ADDRESS:

LANDSCAPE DESIGNER

PROJECT NAME:

BOROUGH OF  
EBENSBURG  
LAKE ROWENA  
DOG PARK

CAMBRIA COUNTY

REV. DATE: DESCRIPTION

ISSUE: 1-27-2022

PROJECT NO. EBG-01

SCALE: AS-SHOWN

DRAWN BY: Dave Petrosky

Revised set : 1-12-23

DETAIL SHEET  
DOGIPOT PET  
STATION

S2.03

NOTE: THESE MANUFACTURER DETAILS ARE FOR INFORMATIONAL PURPOSES ONLY !! CONTRACTOR TO CONTACT THE SUPPLIER DIRECTLY FOR CONSTRUCTION AND INSTALLATION PURPOSES.

PRODUCED BY AN AUTODESK STUDENT VERSION

PRODUCED BY AN AUTODESK STUDENT VERSION



FOR ALL PLAY EQUIPMENT

**WARRANTY&TERMS**

**WARRANTY:** 5 Year Limited Warranty on Thermoplastic/Canine coated elements.

The Park Catalog guarantees all items for one full year to be free of defects in workmanship or materials when installed and maintained properly. We agree to repair or replace, any items determined to be defective. Items specifically not covered by this warranty include vandalism, man made or natural disasters, lack of maintenance, normal weathering or wear and tear due to public abuse.

**ORDER INFORMATION:** When ordering please include a brief description of all items. Be sure to include colors for Canine coated and powder coated surfaces. To assist The Park Catalog in entering orders properly, please fax or mail orders on your standard purchase order form. Quotes are good for 30 days.

**GSA CONTRACT:** GSA pricing is available on several items. Contact our sales department for specific information.

**SPECIFICATIONS:** Due to The Park Catalog's continuous product improvement, we reserve the right to change specifications when necessary without notice.

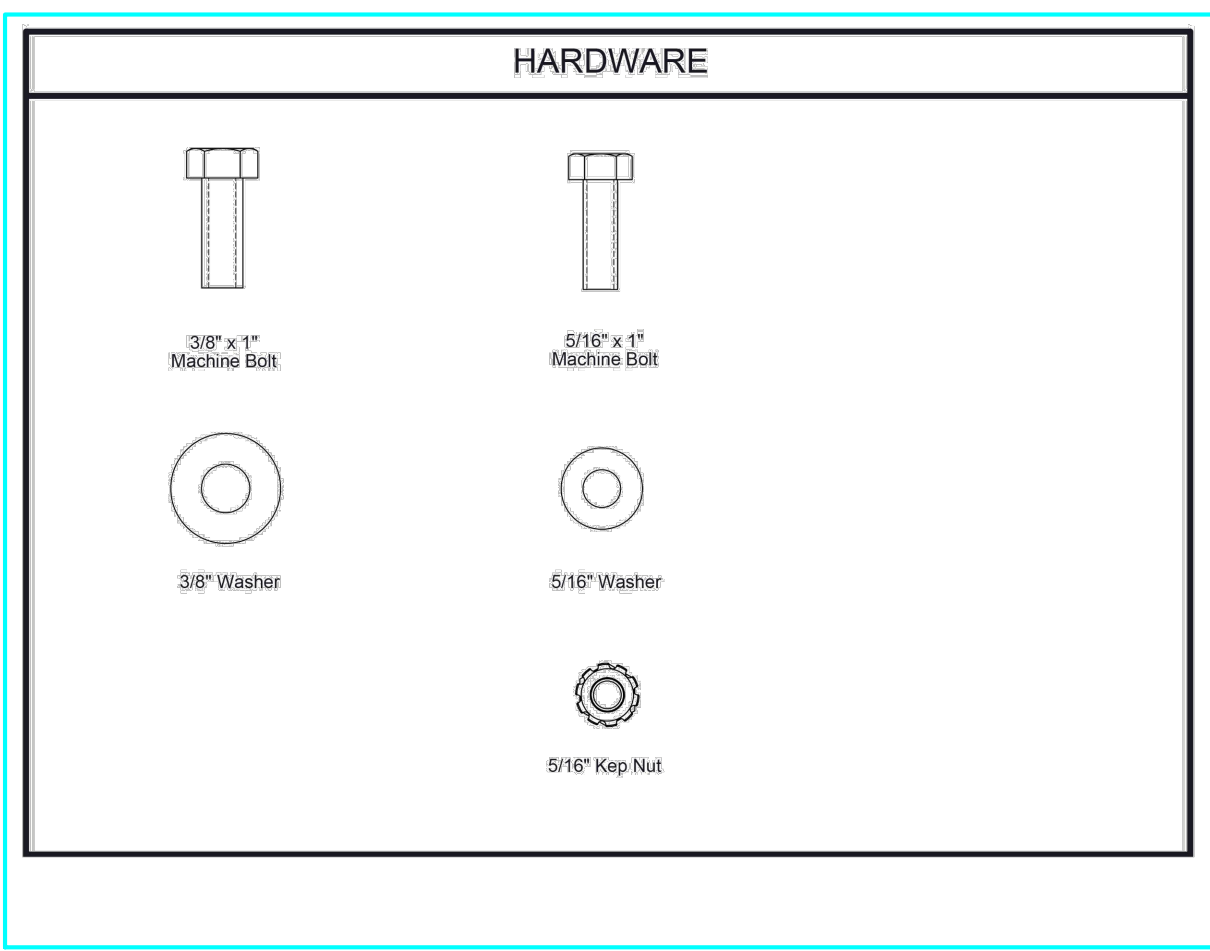
**PRICING:** The Park Catalog strives to keep pricing as low as possible. However, should we encounter increases in our costs that are simply too large to absorb, we reserve the right to increase prices without notice.

**TERMS:** Approved accounts net 30 days. Initial order requires payment in full before shipment. A finance charge of 1-12% per month will be applied to all delinquent accounts. We accept VISA, MASTERCARD and AMERICAN EXPRESS.

**FREIGHT CHARGES:** Terms of sale are F.O.B. factory. The Park Catalog will prepay and add the freight to the invoice if requested to do so. All weights are approximate.

Damages or loss in transit is the responsibility of the carrier, whether visible or concealed. It is the responsibility of the recipient to assure that the order is received complete. Before signing the delivery receipt, inspect the shipment immediately and completely. Note any damages or shortages on the bill of lading. Damage reports must be filed within 10 days. The Park Catalog is NOT responsible for damages or loss in transit. Title to all goods passes to the customer at the time of shipment. The Park Catalog will assist in filing claims if the freight arrangements were made by The Park Catalog at your request.

**CANCELLATIONS AND RETURNS:** Cancellations are only accepted with approval of The Park Catalog. No merchandise shall be returned without a Return Goods Authorization number which is issued by customer service. Any authorized merchandise must be carefully packed and received in salable condition. A restocking charge of up to 25% will be applied to all returned goods when the error is not the fault of The Park Catalog. All returns must be shipped freight prepaid.



FOR ALL PLAY EQUIPMENT

**TOOLS REQUIRED**

1/2\"/>

BARK.PARK PRODUCT SPECIFICATIONS

**King of the Hill**

Plating: 12 gauge sheet steel. 7 gauge x 1-1/2\"/>

COMPONENTS

ITEM NO.	Part No.	DESCRIPTION	QTY
1	T-01-08-0001	King of the Hill Plank	2
2	P-01-08-0013	24 1/8\"/>	
3	P-01-08-0001	63 1/8\"/>	
4	T-01-08-0012	Bone Brace	2
5	33-03-0008	3/8\"/>	
6	33-03-0007	5/16\"/>	
7	33-03-0006	3/8\"/>	
8	33-03-0009	5/16\"/>	
9	33-03-0007	5/16\"/>	
10	T-01-08-0022	Back park side step	2

STEP 1

STEP 2

STEP 3

STEP 4

FOOTINGS

OVERALL DIMENSIONS

ALL CONCRETE SHALL BE 3000 PSI 28 DAY MINIMUM.

Lake Rowena Park

Ebensburg, PA  
Cambria County, PA

COMPANY ADDRESS:

LANDSCAPE DESIGNER:

PROJECT NAME:

**BOROUGH OF EBENSBURG  
LAKE ROWENA  
DOG PARK**

**CAMBRIA COUNTY**

REV.	DATE:	DESCRIPTION
ISSUE:	1-27-2022	
PROJECT NO.	EBG-01	
SCALE:	1"= 20'	
DRAWN BY:	Dave Petrosky	

Revised set : 1-12-23

DETAIL SHEET  
KING OF THE  
HILL SPECS

S2.04

NOTE: THESE MANUFACTURER DETAILS ARE FOR INFORMATIONAL PURPOSES ONLY !! CONTRACTOR TO CONTACT THE SUPPLIER DIRECTLY FOR CONSTRUCTION AND INSTALLATION PURPOSES.

PRODUCED BY AN AUTODESK STUDENT VERSION

PRODUCED BY AN AUTODESK STUDENT VERSION



thepark  
AND FACILITIES  
C A T A L O G

Spec Sheet

Overall Dimensions

Top View: 48 1/8" x 54 1/8" x 17"  
Side View: 48" x 44 1/2" x 11 1/2"  
End View: 17" x 11 1/2"

The Park Catalog  
220 Congress Park Dr., Suite 215 Delray Beach, FL 33445 | 800-693-3303 | theparkcatalog.com

thepark  
AND FACILITIES  
C A T A L O G

Spec Sheet

Doggie Crawl 439-1007

Footings

DETAIL A  
SCALE 1/8"

INSTRUCTIONS:  
WITH FOOTING IN POSITION, SECURE EACH FOOTER TO THE GROUND USING GROUND SPIRES (SHOWN).  
NOTE: A 36" HAMMER MAY BE REQUIRED TO DRIVE SPIRES INTO THE GROUND.

The Park Catalog  
220 Congress Park Dr., Suite 215 Delray Beach, FL 33445 | 800-693-3303 | theparkcatalog.com

thepark  
AND FACILITIES  
C A T A L O G

Spec Sheet

Assembly Instructions - Step 2

ATTACH U-SHAPED SUPPORT FRAME TO THE FOOTER USING SPECIFIED HARDWARE. HARDWARE PROVIDED.

The Park Catalog  
220 Congress Park Dr., Suite 215 Delray Beach, FL 33445 | 800-693-3303 | theparkcatalog.com

thepark  
AND FACILITIES  
C A T A L O G

Spec Sheet

Assembly Instructions - Step 1

BOLT THE CRAWL TUNNEL TO THE U-SHAPED SUPPORT FRAME USING SPECIFIED HARDWARE. HARDWARE PROVIDED.

The Park Catalog  
220 Congress Park Dr., Suite 215 Delray Beach, FL 33445 | 800-693-3303 | theparkcatalog.com

bark park  
1676 Locust Street  
Red Bud, IL 62278  
Phone: 618-282-6200  
Fax: 618-282-6202

WARRANTY & TERMS

**WARRANTY:** 5 Year Limited Warranty on Thermoplastic/Canine coated elements.

Bark Park guarantees all items for one full year to be free of defects in workmanship or materials when installed and maintained properly. We agree to repair or replace, any items determined to be defective. Items specifically not covered by this warranty include vandalism, man made or natural disasters, lack of maintenance, normal weathering or wear and tear due to public abuse.

**ORDER INFORMATION:** When ordering please include a brief description of all items. Be sure to include colors for Canine coated and powder coated surfaces. To assist Bark Park in entering orders properly, please fax or mail orders on your standard purchase order form. Quotes are good for 30 days.

**SPECIFICATIONS:** Due to Bark Park's continuous product improvement, we reserve the right to change specifications when necessary without notice.

**PRICING:** Bark Park strives to keep pricing as low as possible. However, should we encounter increases in our costs that are simply too large to absorb, we reserve the right to increase prices without notice.

**TERMS:** Approved accounts net 30 days. Initial order requires payment in full before shipment. A finance charge of 1-1/2% per month will be applied to all delinquent accounts. We accept VISA, MASTERCARD and AMERICAN EXPRESS.

**FREIGHT CHARGES:** Terms of sale are F.O.B. factory. Bark Park will prepay and add the freight to the invoice if requested to do so. All weights are approximate.

Damages or loss in transit is the responsibility of the carrier, whether visible or concealed. It is the responsibility of the recipient to assure that the order is received complete. Before signing the delivery receipt, inspect the shipment immediately and completely. Note any damages or shortages on the bill of lading. Damage reports must be filed within 5 days. Bark Park is NOT responsible for damages or loss in transit. Title to all goods passes to the customer at the time of shipment. Bark Park will assist in filing claims if the freight arrangements were made by Bark Park at your request.

**CANCELLATIONS AND RETURNS:** Cancellations are only accepted with approval of Bark Park. No merchandise shall be returned without a Return Goods Authorization number which is issued by customer service. Any authorized merchandise must be carefully packed and received in salable condition. A restocking charge of up to 25% will be applied to all returned goods when the error is not the fault of Bark Park. All returns must be shipped freight prepaid.

9/17/2019

Page 2 of 10

thepark  
AND FACILITIES  
C A T A L O G

Spec Sheet

Doggie Crawl 439-1007

The Park Catalog  
220 Congress Park Dr., Suite 215 Delray Beach, FL 33445 | 800-693-3303 | theparkcatalog.com

thepark  
AND FACILITIES  
C A T A L O G

Spec Sheet

Components

ITEM NO.	Part No.	DESCRIPTION	QTY
1	02-07-0080	crawl tunnel	1
2	02-07-0087	crawl tunnel u shaped support frame	2
3	0-01-08-0276	crawl tunnel footer	4
4	33-06-0133	5/16" x 1 3/4" Button Torx Bolt (SS)	16
5	33-01-0616	3/8" Hex Nut (SS)	4
6	33-06-0134	3/8" x 1 1/4" Button Torx Bolt (SS)	2
7	33-03-0018	5/16" T nut, SS	14
8	33-02-0032	5/16" lock washer SS	14
9	33-02-0061	5/16" Zinc Plated Washer	14

NOTE:  
SUPPLIER FOR SPECIFICS IF NECESSARY.  
ALL CONCRETE SHALL BE 3000 PSI 28 DAY MINIMUM.  
CONTRACTOR MAY NEED TO CONTACT

The Park Catalog  
220 Congress Park Dr., Suite 215 Delray Beach, FL 33445 | 800-693-3303 | theparkcatalog.com

thepark  
AND FACILITIES  
C A T A L O G

Spec Sheet

Tools Required

The Park Catalog  
220 Congress Park Dr., Suite 215 Delray Beach, FL 33445 | 800-693-3303 | theparkcatalog.com

thepark  
AND FACILITIES  
C A T A L O G

Spec Sheet

Hardware

The Park Catalog  
220 Congress Park Dr., Suite 215 Delray Beach, FL 33445 | 800-693-3303 | theparkcatalog.com

thepark  
AND FACILITIES  
C A T A L O G

Spec Sheet

Safety Warnings & Equipment Inspection

- Owners and installers please note these safety warnings and make use of this checklist on a regular basis.
- Follow installation instructions when erecting equipment.
- Ground surfaces around equipment should be restored as needed. Concrete footings should never be exposed. Surface depth should comply with ASTM and CPSC specifications.
- Check for and repair damage caused by wear or vandalism, a major factor in injury causing situations.
- All protruding bolts should be covered or cut off and finished smooth. Sharp edges on pipes should be capped or removed. Check for bent, broken, or severely worn pipe, and replace.
- All equipment should be free of rust and repainted whenever necessary to deter rusting.
- We provide our customers with layout sheets and installation instructions. Please keep on file the specifications sheet that contains the listing of every part used.
- Never add components not intended for use with this product.
- Regular maintenance is necessary in this and all park and recreational equipment to insure the safety of the user.
- Note: Proper maintenance of equipment requires regular tightening of all bolts, nuts, and setscrews.
- Note: Regular checking of all parts, castings, etc. should be made. If a part is broken or worn, it should be replaced immediately.
- Check to be sure all fittings are tight and that bars and pipes do not move.
- Replace all worn S-hooks. S-hooks must be completely closed. Failure to close S-hooks can result in serious injury to the user. NEVER reuse S-hooks.
- Test for free movement of swing hanger and other moving attached parts.
- Check for worn chains and replace them.
- A soft resilient surface should be placed under all swings extending at least twice the height of the top rail both front and back.

The Park Catalog  
220 Congress Park Dr., Suite 215 Delray Beach, FL 33445 | 800-693-3303 | theparkcatalog.com

thepark  
AND FACILITIES  
C A T A L O G

Spec Sheet

Product Specifications

CRAWL TUNNEL: THE 26" I.D. WITH 1/4" NOMINAL WALL THICKNESS SHALL BE ROTATIONALLY MOLDED LINEAR LOW DENSITY POLYETHYLENE.

FOOTER POST: FOOTER POST SUPPORT SHALL BE FABRICATED FROM 1.315" O.D., 14ga (.083" WALL) GALVANIZED STEEL TUBING AND POWDER COATED AFTER FABRICATION.

FOOTER: 1" O.D. 14ga (.083" WALL) GALVANIZED STEEL TUBING WELDED TO 1/4" THICK GALVANIZED STEEL PLATE.

HARDWARE: PRIMARY HARDWARE IS STAINLESS STEEL.

OVERALL DIMENSIONS: 49"L x 40"W x 45"H

WEIGHT: 80 lbs.

The Park Catalog  
220 Congress Park Dr., Suite 215 Delray Beach, FL 33445 | 800-693-3303 | theparkcatalog.com

Lake Rowena  
Park

Ebensburg, PA  
Cambria County, PA  
COMPANY ADDRESS:

LANDSCAPE DESIGNER

PROJECT NAME:

BOROUGH OF  
EBENSBURG  
LAKE ROWENA  
DOG PARK  
CAMBRIA COUNTY

REV. DATE: DESCRIPTION

ISSUE: 1-27-2022

PROJECT NO. EBG-01

SCALE: 1"= 20'

DRAWN BY: Dave Petrosky RLA

Revised set : 1-12-23

DETAIL SHEET  
DOGGIE CRAWL  
SPECS

S2.06

NOTE: THESE MANUFACTURER DETAILS ARE FOR INFORMATIONAL PURPOSES ONLY !! CONTRACTOR TO CONTACT THE SUPPLIER DIRECTLY FOR CONSTRUCTION AND INSTALLATION PURPOSES.

# FINAL LAND DEVELOPMENT PLAN FOR LAKE ROWENA DOG PARK

## Borough of Ebensburg Sheet Index

S1.00	Cover Sheet
S1.01	Site Plan
S1.01B	Layout Plan
S1.02	Grading, Drainage and Utilities Plan
S1.03	Enlargement Plan of Entrance Area
S2.01	Site Details
S2.02	Detail Sheet Pet Fountains/Shower Etc.
S2.03	Detail Sheet Dogipot Pet Station
S2.04	Detail Sheet King of the Hill Specs
S2.05	Detail Sheet Rover Jump Over Specs
S2.06	Detail Sheet Doggie Crawl Specs
S3.00	Erosion and Sedimentation Control Plans
S3.01	Erosion and Sedimentation Control Details
S3.02	Erosion and Sedimentation Control Details 2

## General Notes

- GENERAL SITE INFORMATION:
- a.) Client/Owner – The Borough of Ebensburg 300 West High Street  
Ebensburg, PA 15931 Phone: (814)472–8780
- b.) Disturbed Area – ±0.26 Acres
- c.) Zoning – "O–C" Open – permitted use
- d.) Land Use – Current: Existing Recreation Area including: Lake Rowena, 5 pavilions, Maintenance Building, Baseball Field, Volleyball Court, Restroom and Swing Set  
Proposed: Addition of a Dog Park around the North and West side of the Existing Hockey Rink
- e.) Building Setback Requirements – No Setbacks Required for Dog Park with no large structures.
- f.) Construction Area: Proposed Dog Park
- g.) PA One Call: Design Serial No. 8–10–21 20212222296
- Source of Topography Information: From ground control surveys dated August 4, 2005.  
prepared by L. Robert Kimball and Associates. Additional Property Line verification for Takacs property completed by CPS Surveys dated April 5, 2021.
- Horizontal control is based on an arbitrary datum, holding magnetic bearing.
- Vertical control is based on NAVD88 datum. Elevations were established from USGS Benchmark "BM–63", elevation 1994.90.
- Site Contractor to contact the Pa One Call System at (800) 242–1776 at least 3 days prior to construction. Make final one call 90 days prior to construction.
- Construction shall conform to all applicable state and local standards, specifications and requirements.
- Existing pavement damaged by new construction shall be repaired per standard PA Dot Construction practices and specifications or Borough of Ebensburg criteria whichever is more stringent.
- Prior to construction, Site Contractor shall verify from the site drawings and manufacturer specifications all dimensions, details and treatment for the Dog Park play apparatus and site amenity features.
- Erosion and sedimentation controls shall be provided where necessary prior to clearing, grubbing, and construction. A set of the Erosion and Sedimentation drawings shall be available on site.
- Site Contractor shall locate all existing underground utilities and new crossings by test pits prior to construction in the vicinity of the utilities and contact the engineer if a problem arises prior to construction. Contact Josh Surkovich of the Borough with any questions.
- Do not scale drawings.
- Pipe lengths shown on the plans are measured in a horizontal plane from the center of structure to center of structure. Site Contractor to adjust pipe lengths to account for slope.
- All subsurface drainage pipes shall have a minimum of 8" of cover or as shown to the top of pipe.
- All subsurface drainage pipes shall be installed by the Ebensburg Borough unless otherwise noted.
- The Site Contractor is responsible for the removal and disposal of trees and stumps by grinding.
- A copy of the Erosion and Sedimentation Control Plan must be on–site at all times during the course of the project.
- In order for the Erosion and Sedimentation Control Plan to function properly, the construction sequence staging must be followed throughout the construction of the project.
- Contractor shall follow all OSHA requirements especially regarding equipment operation with regards to close proximity to overhead power lines.
- If the Contractor encounters roots during excavation, they shall do their best to work around without damaging the roots, unless the roots interfere with the construction. If that's the case, the contractor shall cut the root in a clean, neat and precise cut as method of best practices.
- As part of this contract, The Borough of Ebensburg shall be responsible for the installation, material cost and construction of the described water line. It will be the responsibility of the contractor to coordinate the planning and timing, of the installation of the water line. The water line and the park itself is planned to be shut down in the winter months and closed in the evening hours. There are no lights and electricity planned for this project.
- The Site Contractor is responsible for providing the Borough of Ebensburg with a complete set of As–Built Plans with horizontal and vertical locations of all storm pipes, utilities and all apparatus and bench locations after the project has been completed.
- Concrete Walks and Concrete Pads for all dog park benches, covered benches, and Dog apparatuses shown on details shall be provided as necessary, with a broom finish and sloped to drain from 1% to maximum 2%.
- See Site Plan only for all identified items that are part of or not part of this project.
- All plans and specifications shall be adhere to the most recent version of PADOT PUB 408, unless specified otherwise.

## Site Notes

- Ebensburg Borough Deed Reference DBV 763/722 & DBV 1515/ 158  
Tax Map 25–20 Part of Parcel 112.
- Flood Note: This property located in zone X (area of minimal flood hazard) Per FEMA Rate Map Number 4201C030305D with an effective date of June 12, 19 2012. There are no identifiable Wetland Area noted by the U.S. Department of the Interior, Fish and wildlife Commission. However the owner is responsible of verifying if wetlands exist.

## CAMBRIA COUNTY PA LIST OF PUBLIC UTILITIES

**SANITARY SEWER**  
EBENSBURG MUNICIPAL AUTHORITY  
300 WEST HIGH STREET  
EBENSBURG, PA 15931  
PHONE: 814–207–4027  
ATTN: JOSH SURKOVICH

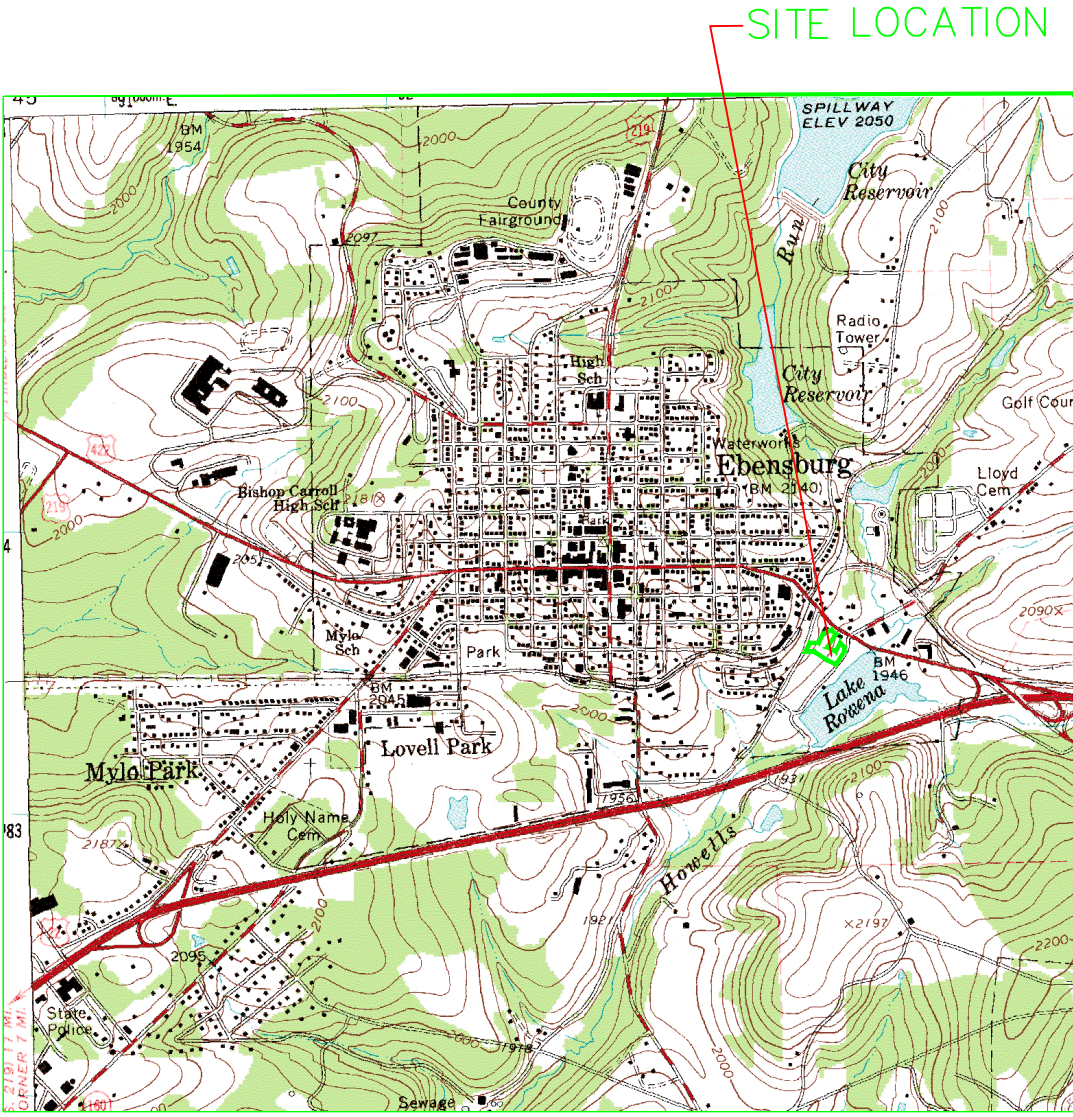
**WATER**  
EBENSBURG MUNICIPAL AUTHORITY  
300 WEST HIGH STREET  
EBENSBURG, PA 15931  
PHONE: 814–207–4027  
ATTN: JOSH SURKOVICH

**GAS**  
DOMINION PEOPLES  
3115 ELTON ROAD  
JOHNSTOWN, PA 15904  
PHONE: 814–269–6333  
ATTN: ROBERT THOMAS

**ELECTRIC**  
PENELEC – FIRST ENERGY CORP.  
367 INDUSTRIAL PARK ROAD  
EBENSBURG, PA 15931  
PHONE: 570–994–7839  
ATTN: RICK FINK  
Rfink@firstenergycorp.com

**TELEPHONE**  
VERIZON  
1119 16TH 3RD FLOOR  
ALTOONA, PA 16601  
PHONE: 814–946–5910  
ATTN: JERRY DOWNING

**CABLE TELEVISION**  
COMCAST  
1155 PLANK ROAD  
CARROLLTOWN, PA 15722  
PHONE: 814–344–8055 EXT. 134  
ATTN: BILL ICKES



## Site Location Map

Scale: 1" = 2000'

## PARKING TABULATIONS

Use	Reference	Criteria	Comments	Parking Required	Parking Provided
Hockey Rink	Borough of Ebensburg Zoning Ordinance	Provide 1 space for 4 customers at max capacity plus 1 space per 2 persons employed for peak period	10 players each Team plus (x2) plus 2 coaches plus 2 Referees 1 part-time employee	6 1	6 1
Hockey Rink	DCNR	Provide 1 space for every 2 available spectator seats	2 sets bleachers max seat capacity spectator seats = 27 seats each	22	22
Skate Board Area	Borough of Ebensburg Zoning Ordinance	Provide 1 space for 4 customers at max capacity plus 1 space per 2 persons employed for peak period.	Maximum users planned are 41* for 6,829 sf no employees	10 0	10 0
	DCNR	Provide 1 space for every 2 available spectator seats	Spectator Bench area. Assume 8 spectator seats Maximum	4	4
Lake/Fishing/Pavilion	Time–Saver Standards Section 520–3	2.5 persons per automobile	(Borough) use 50 people per day average	20	20
New Dog Park	Ann Arbor Mich. recommendations and guidelines for dogparks	No quantitative data available readily accessible, convenient close to site, provide ADA Access to site.	Recommended Dog Park size is 1/2–1Ac Provided 10 spaces Per Dog Park. Total Approximately 1.58 Ac	10	10
TOTAL PARKING REQUIRED				73	
TOTAL PARKING PROVIDED					73

\* NOTE FROM DCNR SKATING MANUAL – USE 45 SKATERS FOR 7,500 SF OF SKATE PARK, AREA.

## Legend of Existing/ Proposed Symbols And Abbreviations

ITEM	EXISTING	PROPOSED
BITUMINOUS PAVEMENT (12" FULL DEPTH)		
4" CONCRETE SIDEWALK	N/A	
3.5' WIDE WALKING PATH WITH AASHTO # 10 SURFACE	N/A	
SURVEY CONTROL POINT		
BENCHES	N/A	
DOG PLAY APPARATUS	N/A	
GRASS AREA ON EROSION CONTROL PLAN	N/A	
FENCE LINE	— x —	— □ —
PAVEMENT MARKING	— — —	— — —
STORMWATER INLET	□	□
STORMWATER PIPE	== == ==	== == ==
GUARD RAIL	— — —	N/A
ELECTRIC BOX	EB	N/A
EXISTING TREES		N/A
WATER LINE	— — —	— — —
SANITARY SEWER LINE	— — —	N/A
EXISTING MONITORING WELL	W	N/A
SPOT ELEVATIONS	81.00	1950.2
GROUND CONTOURS	— 982.0 —	— 1955 —
INLET PROTECTION	N/A	
LIMIT OF DISTURBANCE	N/A	
SILT SOCK	N/A	SS
DIRECTION OF DOWNWARD SLOPE	N/A	2%
EXISTING IRON PIN	IP	N/A
ELECTRICAL CONDUIT/CABLE	— E —	N/A
ELECTRICAL GUY WIRE	— — —	N/A
ELECTRICAL POWER POLE	— — —	N/A

## Professional Landscape Architect Certification

I David Petrosky, a Registered Landscape Architect in the Commonwealth of Pennsylvania, hereby certify that the Improvements shown herein, have been designed in accordance with the Professional Standard of Care.

Registration Number LA001189E

Date: 1--27-2022

Expiration Date 5-31-2023

Lake Rowena  
Park

Ebensburg, PA  
Cambria County, PA

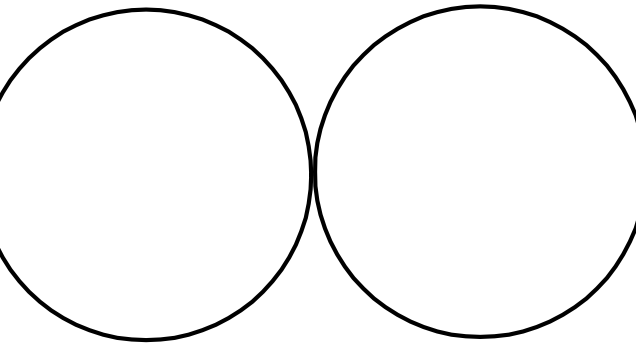
COMPANY ADDRESS:

LANDSCAPE DESIGNER

PROJECT NAME:

BOROUGH OF  
EBENSBURG  
LAKE ROWENA  
DOG PARK

CAMBRIA COUNTY



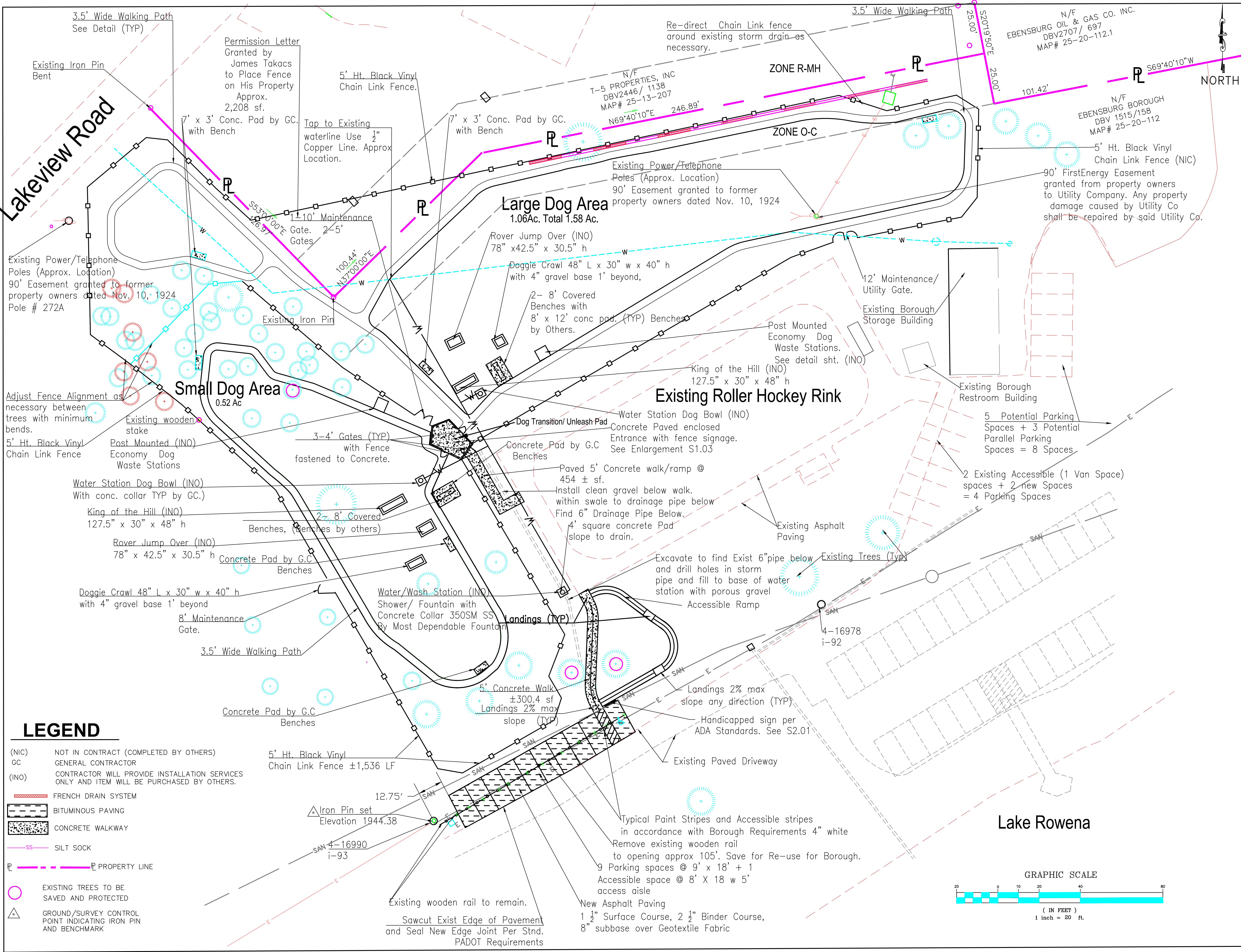
REV. DATE: DESCRIPTION

ISSUE: 1-27-2022  
PROJECT NO. Ebg. 01  
SCALE: As Shown  
DRAWN BY: Dave Petrosky, RLA

Revised Set 1-12-23

COVER SHEET

S1.00



Lake Rowena Park

Ebensburg, PA  
Cambria County, PA  
COMPANY ADDRESS:  
LANDSCAPE DESIGNER  
PROJECT NAME:

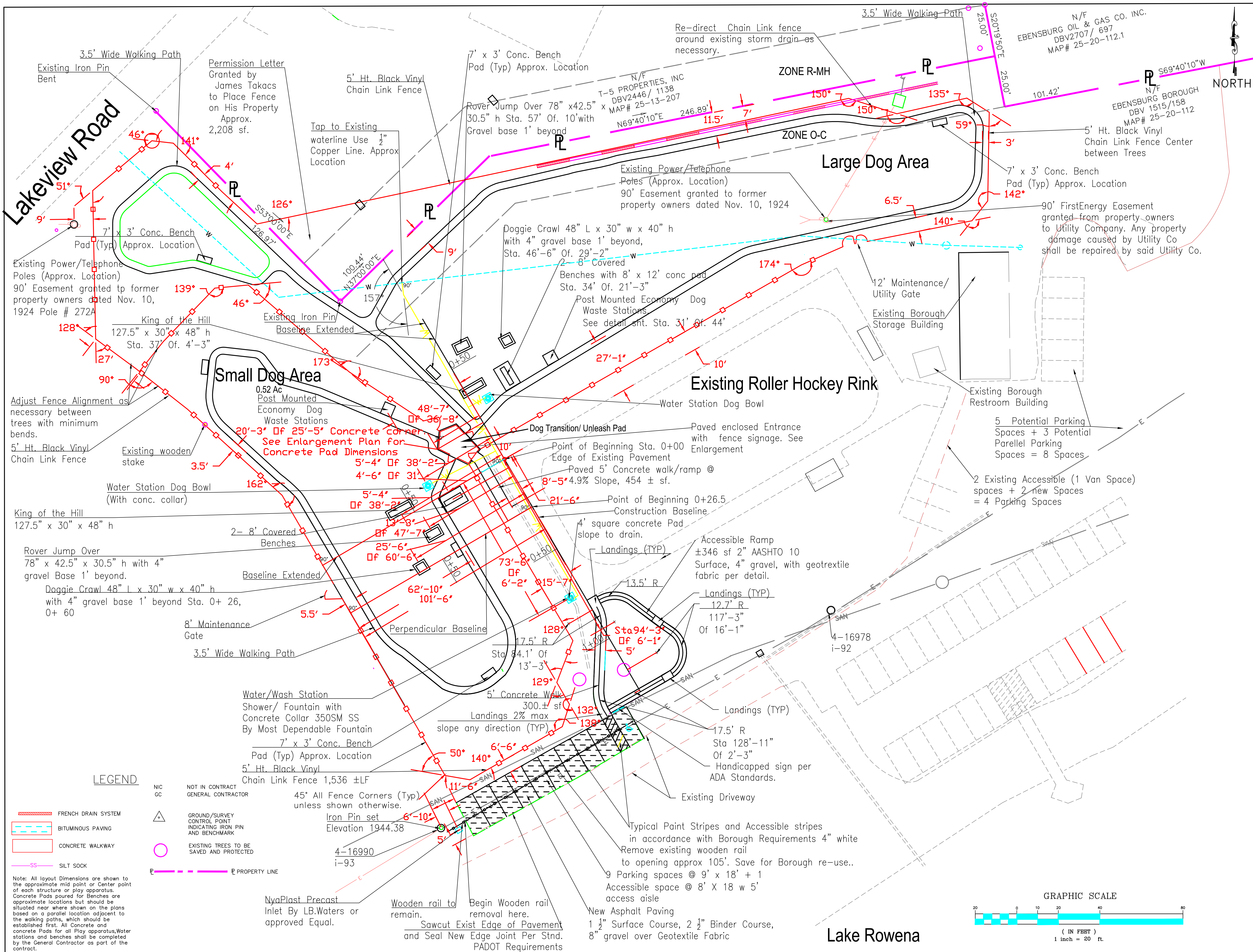
BOROUGH OF EBENSBURG  
LAKE ROWENA DOG PARK  
CAMBRIA COUNTY

REV.	DATE:	DESCRIPTION
	1-27-2022	
	PROJECT NO.	EBG-01
	SCALE:	1"= 20'
	DRAWN BY:	Dave Petrosky, RLA

Revised Set 1-12-23

SITE PLAN

S1.01



Lake Rowena Park

Ebensburg, PA Cambria County, PA

COMPANY ADDRESS:

LANDSCAPE DESIGNER

PROJECT NAME:

BOROUGH OF EBENSBURG

LAKE ROWENA DOG PARK

CAMBRIA COUNTY

REV.	DATE:	DESCRIPTION
	1-27-2022	
	PROJECT NO.	EBG-01
	SCALE:	1"= 20'
	DRAWN BY:	Dave Petrosky, RLA
	Revised Set	1-12-23

LAYOUT PLAN

S1.01B

**CAMBRIA COUNTY**

# S1.02

Lake Rowena  
Park

Ebensburg, PA  
Cambria County, PA

COMPANY ADDRESS:

LANDSCAPE DESIGNER

PROJECT NAME:

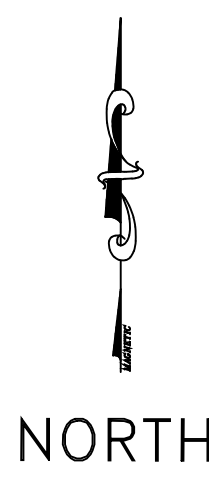
**BOROUGH OF  
EBENSBURG  
LAKE ROWENA  
DOG PARK**  
  
**CAMBRIA COUNTY**

REV.	DATE:	DESCRIPTION
ISSUE:	1-27-2022	
PROJECT NO.	EBG -01	
SCALE:	1"= 10'	
DRAWN BY:	Dave Petrosky , RLA	

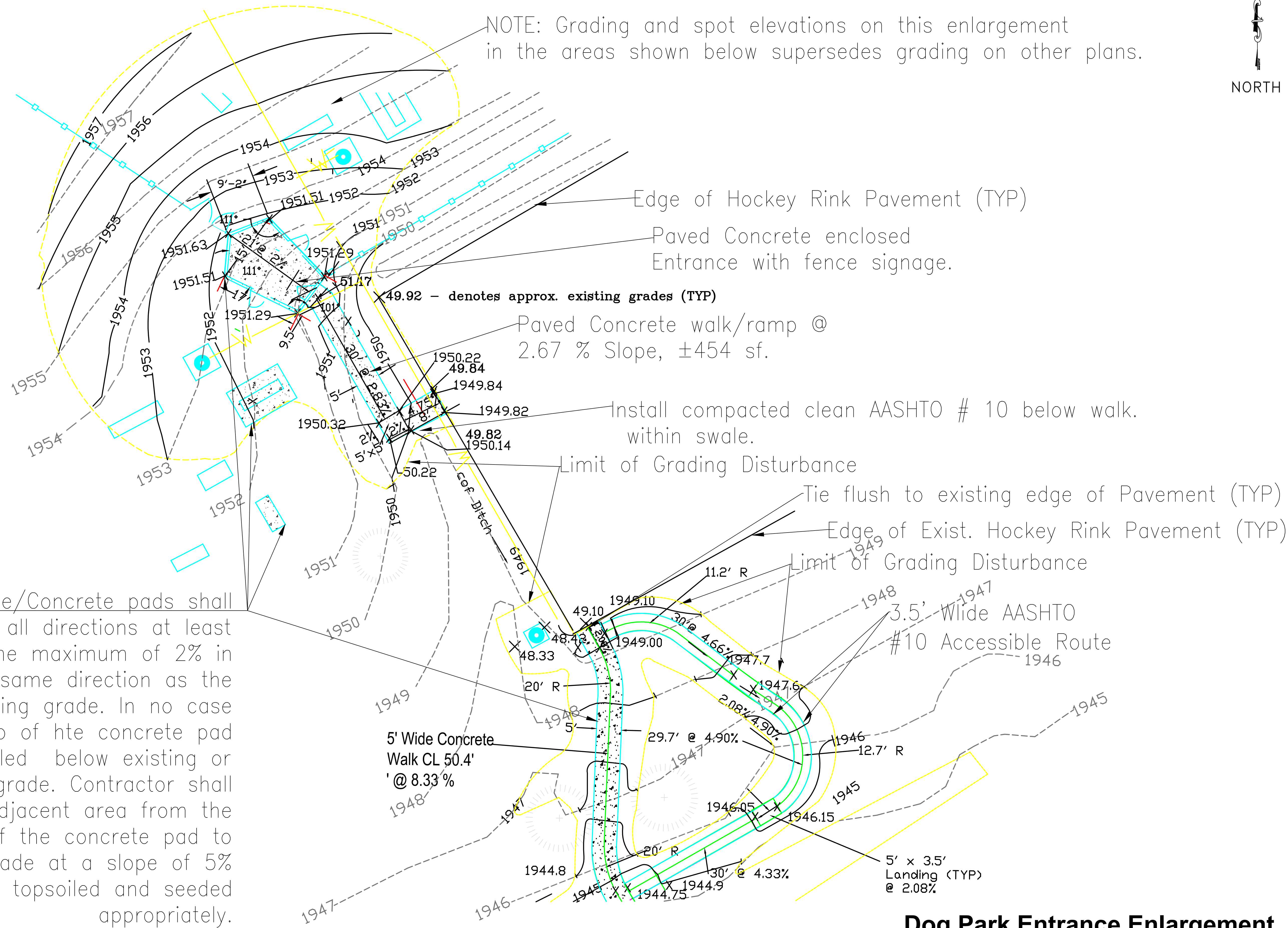
Revised Set 1-12-23

**Enlargement Plan  
of Entrance Area**

**S1.03**

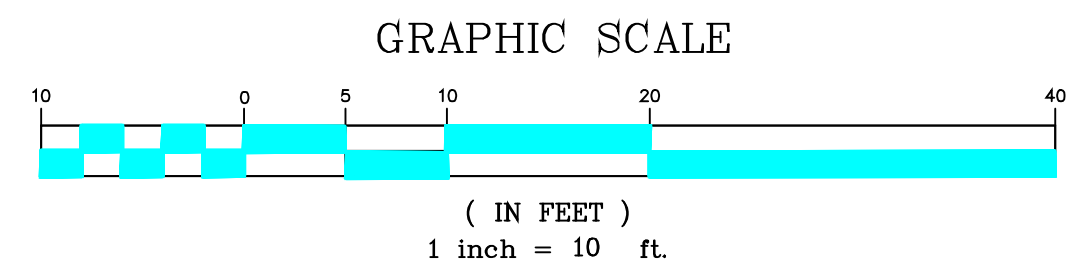


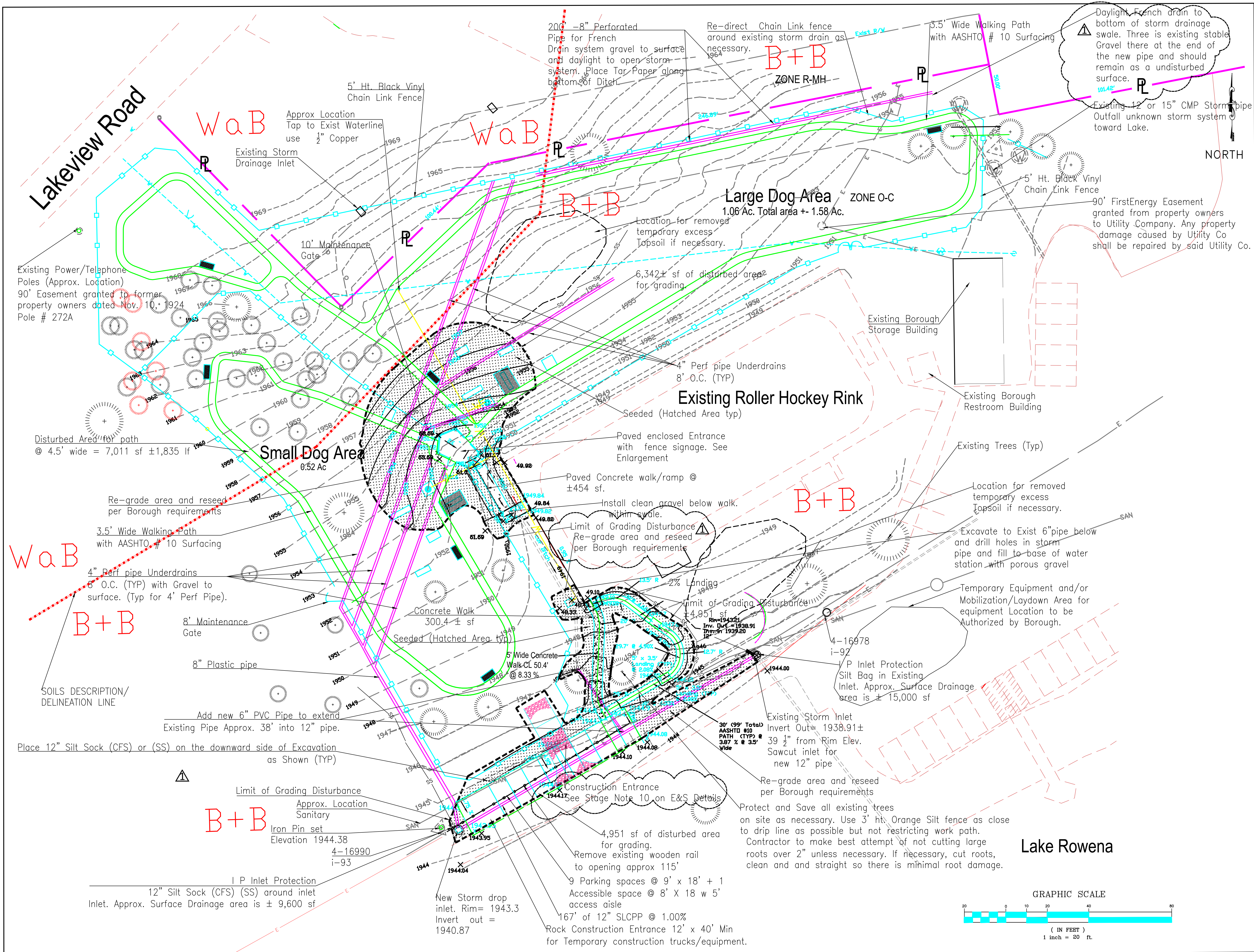
NOTE: Grading and spot elevations on this enlargement  
in the areas shown below supersedes grading on other plans.



All Concrete/Concrete pads shall  
be sloped in all directions at least  
1% and the maximum of 2% in  
the same direction as the  
surrounding grade. In no case  
shall the top of hte concrete pad  
be installed below existing or  
proposed grade. Contractor shall  
backfill the adjacent area from the  
top of the concrete pad to  
existing grade at a slope of 5%  
or less and topsoiled and seeded  
appropriately.

**Dog Park Entrance Enlargement**





Lake Rowena Park

Ebensburg, PA  
Cambria County, PA  
COMPANY ADDRESS:  
LANDSCAPE DESIGNER  
PROJECT NAME:

BOROUGH OF EBENSBURG  
LAKE ROWENA DOG PARK  
CAMBRIA COUNTY

REV.	DATE:	DESCRIPTION
	DATE:	1-27-2022
	PROJECT NO.	EBG-01
	SCALE:	1"= 20'
	DRAWN BY:	Dave Petrosky, RLA
	E & S Comments addressed 2-7-2022	
	Revised Set 1-12-23	

EROSION AND SEDIMENTATION CONTROL PLAN

S3.00

EROSION AND SEDIMENTATION CONTROL NOTES

Narrative

1. Dave Petrosky, RLA, is preparing the design for a new Dog Park Design on the North/West/South side of the existing Roller Hockey Rink that will be constructed at the Lake Rowena Recreation Park located in the Borough of Ebensburg, Cambria County, Pennsylvania. The Lake Rowena Rec Park bounds the Dog Park on the East, South and West.
- The site is bounded on the North by a Veterinary Hospital that is zoned R-MH, Multiple Household Residential. The site's main access will be from High Street where there is currently a traffic light to help control ingress and egress movements. The land is zoned "O-C" Open Space Conservancy. The use is allowed by Borough ordinance. The total disturbed area is approximately 0.26 acres. The disturbed area includes the walking path, a 2' wide area for each storm pipe and the two disturbed areas. This plan shall not be considered all-inclusive and the contractor shall take any necessary to prevent sediment from leaving the site.

Any topsoil stockpiles, excess excavation stockpiles, and any graded area on which work ceases for 7 or more days shall have interim soil erosion and sedimentation control measures performed on them. These measures consist of temporary seeding and mulching of the stockpiles and the installation of the silt fence. All areas not to be paved shall be stabilized by applying final seed mixture and mulching as soon as practical after final earthmoving is complete. All areas to be paved will have stone base subbase applied as soon as possible after reaching final grade. The permanent cover shall be accomplished within 7 days after final grading operations have been completed.

General

- A. The Contractor will be required to implement the Erosion and Sedimentation Pollution Control Plan as shown prior to beginning any work.
- B. As an option, The Contractor may submit his own Erosion and Sedimentation Control Plan to the Cambria County Conservation District for approval.
- C. The Contractor will be required to implement measures indicated on his approved plan as a minimum requirement. However, the Contractor will be responsible for adding additional measures if the ones indicated prove to be inadequate, at no additional cost to the Department.
- D. Lake Rowena has been used for recreational purposes for several decades and the present and future plans for the area will be as the same use.
- E. The contractor shall plan for all construction waste disposal in an appropriate manner and use recycled materials whenever possible. The contractor shall also recycle waste when applicable and appropriate for the project.
- F. The site drains to Lake Rowena and eventually drains to the unnamed tributaries of the Little Conemaugh River. These tributaries are designated as CWF (Cold Water Fishes) within Chapter 93.

Submittals

- A. Contractor will be required to submit catalog cuts/technical data to the Borough Representative Inspector, that shows that the erosion and sedimentation pollution control materials meet the specifications.

- B. Contractor shall also submit to the Borough Representative Inspector for approval a Staging of Earth Moving Activities Schedule which explains the sequence of work with regards to Erosion and Sedimentation Control. Similar of the following:

SEQUENCE OF STAGES OF CONSTRUCTION ACTIVITIES

- The Contractor will:
1. Install E&S measures first to protect existing trees including Inlet Protection and Filter Sock first to prevent the lake from receiving any sediments from the work area.
2. Clear and grub all trees and brush interfering with the work, which is minimal.
3. Contractor shall strip topsoil primarily in the proposed parking area and walks, and install Filter Sock as the BMP along the down slope as shown on the plans.
4. Begin excavation and install storm drain system from the existing inlet and westward and install new storm inlet proceeding northward for the under drains. Install the French drain pipe and continue installing the entire under drain system.
5. Regrade the area to blend into the existing topography.
6. Topsoil, Seed and mulch any disturbed areas. This will occur as segments are completed.
7. Temporary Interim stabilization measure BMP's such as installing silt sock and seeding with an erosion resistant perennial species shall be used until the time a uniform 70% vegetative cover has been established of which is considered as a permanent stabilization.
8. Complete construction of Dog Park areas.
9. Remove All E&S temporary control measures (Silt Sock and RCE etc.).
10. The Construction Entrance (RCE) is shown at 40' long not the 50' wide as the standard shows. However because of the shortened length due to the presence of the existing tree, the RCE may be shortened to 40' long and 20' wide, but the contractor should be prepared to clean the existing drive surface as necessary.
11. The Contractor shall be responsible for restoring and repairing any damaged pavement that occurs during construction, and shall keep all existing traffic area clean.

Erosion and Sedimentation Pollution Control and Seeding & Mulching Materials

- A. Silt Sock shall meet the requirements of Section 865.2, Penn DOT (the Department) 408/2003.
- B. Filter bag to be used for dewatering shall meet the following:
- Typical Properties
- |                          |                                  |
|--------------------------|----------------------------------|
| Weight                   | ASTM D3776 8.3 oz./yd.           |
| Thickness                | ASTM D1777 120 mils              |
| Grab Tensile             | ASTM D4632 240 lbs.              |
| Grab Elongation at Break | ASTM D4632 50%                   |
| Puncture Resistance      | ASTM D4833 115 lbs.              |
| Trapezoidal Tear         | ASTM D4533 100 lbs.              |
| Mullen Burst             | ASTM D3788 350 lbs.              |
| Water, Flow Rate         | ASTM D4491 105 gpm/ft.           |
| Permittivity             | ASTM D4491 1.7 sec.-1            |
| UV Resistance            | ASTM D4355 85% str. ret.         |
| Bag Dimensions           | 15 ft. x 13.25 ft. (approximate) |
- C. Seed Mixtures
1. Seed mixtures shall be in accordance with Section 804.2(b) Penn DOT 408/2003.
- a. Formula E-Temporary Erosion Control, 45 lbs/acre March 15 to October 15
- b. Slopes flatter than 3:1 Formula B-Permanent Seeding, 120 lbs/acre March 15 to June 1, August 1 to October 15
- c. Ditches/Swales Formula W-Permanent Seeding, 60 lbs/acre April 1 to June 15 August 16 to September 16
- D. Mulch materials
1. Mulch shall be hay or straw and shall be in accordance with Section 805.2, Penn DOT 408/2003.
2. Mulch shall be applied at a rate of 3 ton/acre
3. Mulch Binders shall be in accordance with Section 805.2(b), Penn DOT 408/2003.
4. Mulch binders shall be applied at a rate of 775 lbs/acre.

Soil Supplements

1. Soil Supplements shall be in accordance with Section 804.2(a), Penn DOT 408/2003.
2. Pulverized Agricultural Limestone shall be applied at a rate of 4 ton/acre.
3. 10-20-20 Analysis Commercial Fertilizer shall be applied at a rate of 700 lbs/acre
4. Slow-Release Nitrogen Fertilizer shall be applied at the rates as indicated in Section 804.3(c), Penn DOT 408/2003.

Topsoil

Topsoil required can be on site material or from outside the project, all topsoil shall meet the requirements of Section 802.2, Penn DOT 408/2003.

General Procedure

- A. Erosion checks shall be placed prior to beginning any work and shall be maintained throughout the construction period.
- B. The Contractor shall build, maintain and operate all temporary diversions and protective works needed to divert surface water through or around any excavations.
- C. All drainage from bored areas shall be prevented from entering waters of the Commonwealth until sediment has been allowed to settle out.
- D. Natural vegetation shall not be removed from any areas until the Contractor is prepared to conduct subsequent operations in that area.
- E. Excavations shall be dewatered and kept free of standing or running water as needed for proper construction. The Contractor shall furnish, install, operate and maintain all methods and equipment needed to perform any dewatering. Dewatering methods that cause a loss of fines will not be permitted. See wetlands filter bags.
- F. If at any time it is anticipated that work on any segment of the Project will be halted for more than 20 days, the area bored shall be protected from erosion by temporary seeding and mulching. When work is resumed, all temporary protective matter shall be removed at no additional cost to the Department.
- G. Immediately upon completion of any segment of the Project, that segment shall be finished graded and seeded. If completion occurs at a time when seeding would be unsatisfactory, temporary seeding may be applied with the permanent seeding applied when satisfactory seeding can be achieved.
- H. Maintain all erosion and sedimentation control measures while they are in place. Remove and replace damaged geotextile fabric. Replace filter sock if it becomes displaced from the control areas. Periodically remove buildups of sediment by removing the sediment and disposing of it properly in spoil areas. Do not discharge the sediment into the lake or store it where it can be washed into the lake. Replace Filter bags if used, when the buildup of sediment does not permit ready passage of water.

- I. Remove the erosion and sedimentation control measures when they are not longer required for protection. Approval must be received from the Department prior to removal of control measures. The areas shall be restored to conditions meeting the requirements of the final construction, or if the area is outside the limit of a construction feature, it shall be restored to the conditions that existed prior to the installation of the control measures. All accumulated sediment shall be removed by properly disposing of it in spoil areas.

Filter Bag For Dewatering and/or bypass pumping

- A. The filter bag should trap particles larger than 150 microns.
- B. The designed maximum pumping rate for the filter bag, of 1/2 the maximum as specified by the manufacturer, shall not be exceeded.
- C. The filter bag should not be used after it is half filled with sediment. The debris in the filter bag shall be cleaned and dispersed on site after the filter bag is about half filled.
- D. The filter bag should be placed on a stable or well-vegetated area and should not be used on any slope greater than 5. Wherever a well-vegetated area is not available, a geotextile underlayment or an aggregate bed should be used.
- E. The filter bag should discharge into a stabilized area, stabilized watercourse, or stream channel. It should not be allowed to flow down any steep bank.
- F. The pump discharge pipe or hose should securely clamp and be watertight into the bag.

Finish Grading

- A. Contractor shall blend all finished grades in with the adjacent existing topography to provide smooth transitions. Finished surface will be as approved by the Department.

Topsoil Placement

- A. Topsoil shall be placed as necessary to establish grass growth on all disturbed areas.

Seed Bed Preparation

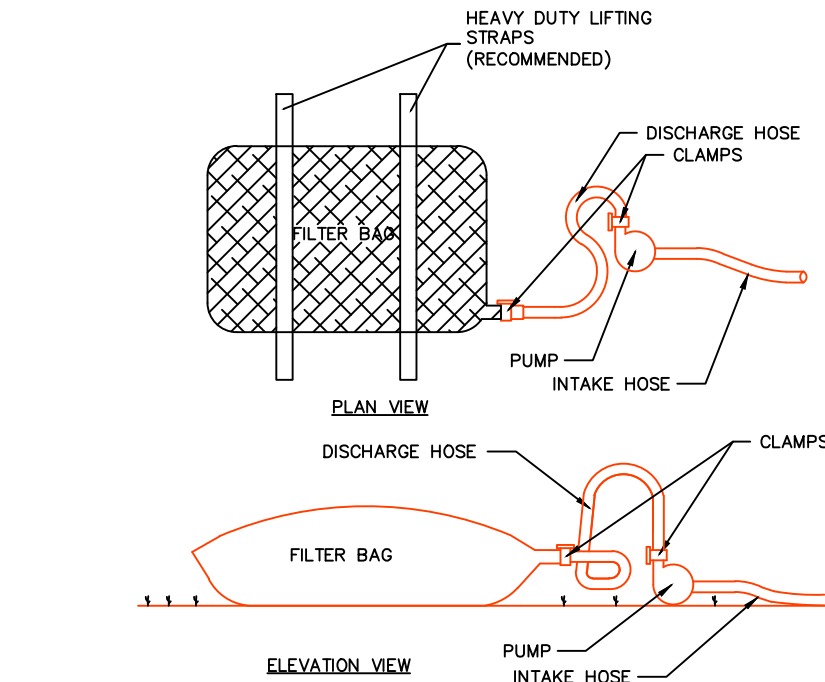
- A. Slopes flatter than 3:1 - Seed bed preparation shall be as per Section 804.3(b), Penn DOT 408/2003.
- B. Slopes 3:1 and Steeper - After the areas to be planted have been brought up to grade and approved by the Department, the slopes shall be scarified in a horizontal direction to sufficiently break up the surface crust for bedding the plants.

Soil Supplements, Seeding and Mulching

- A. Soil supplements, seeding and mulching application rates and construction shall be as per Section 804.3 and 805.3 Penn DOT 408/2003 except rates shall be as indicated this Dwg.
- B. After seeding and mulching operations have been completed, barricades and approved warning signs shall be erected as required to provide protection against traffic and trespass. Excess material from seeding and mulching operations, and all debris, shall be cleaned up and disposed of off the site.

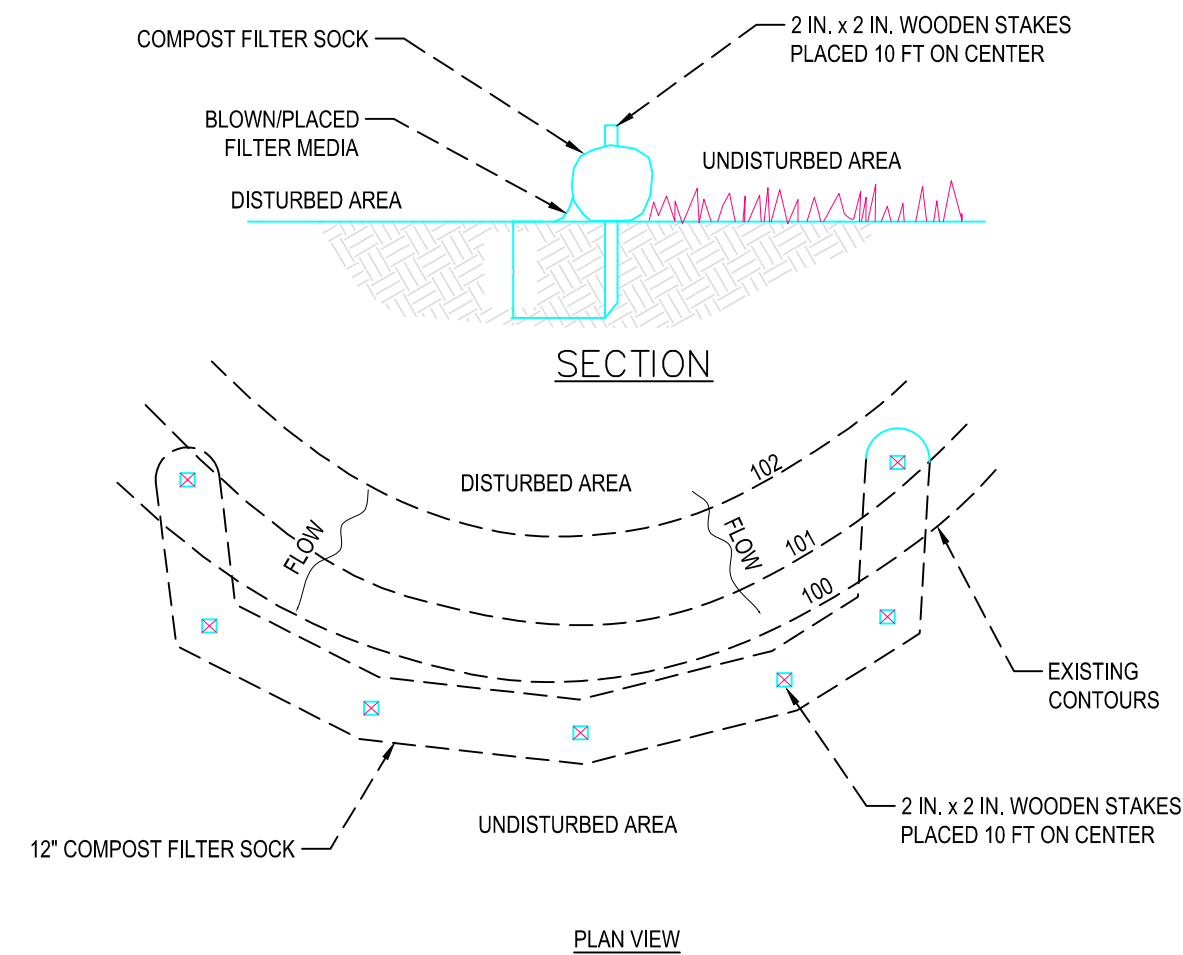
Maintenance Program

- A. The Contractor shall follow the maintenance program as outlined in this Section.
- B. The erosion and sedimentation control measures will be checked on a daily basis and after any storm events. Refer also to maintenance procedures on the standard Drawings. Generally, filter socks should not be used for more than three months, sediment should be removed when accumulations reach 1/3 the above ground height of the barrier and any section of bale, if used, which has undermined or topped must be immediately replaced with a rock filter outlet. Silt fence should be cleaned when accumulations reach 1/2 the above ground height of the fence and any section of fence that has been undermined or topped must be immediately replaced with a rock filter outlet. Rock filters should be removed when clogged with materials. Materials must be washed completely free of all foreign materials or new rock used to rebuild the filter.
- C. The debris in the filter bag shall be cleaned and dispersed on site after the filter bag is about half filled.
- C. Any damage and areas which need cleaned out will be reported and addressed in a timely manner.
- D. All material collected from the control measures and facilities will be placed in fill areas and seeded as specified.
- E. The maintenance program will remain in effect until all control measures are removed.
- F. Reseeding and Repair - During the maintenance period, The Contractor shall maintain the areas completed in accordance with the requirements of Section 804.3(f), Penn DOT 408/2003 until all work under the contract has been completed and has been accepted by the Department. The maintenance shall consist of refilling rain-washed gullies, with acceptable topsoil and fill materials, reseeding, reapplying soil supplements and mulch, as directed by the Department.



GEOTEXTILE FILTER BAG

- A. THE BAG SHALL BE INSTALLED ON A VERY SLIGHT SLOPE SO INCOMING WATER FLOWS DOWNHILL THROUGH THE BAG WITHOUT CREATING MORE EROSION.
- B. THE NECK OF THE FILTER BAG SHALL BE TIGHTLY STRAPPED (MINIMUM TWO STRAPS) TO THE DISCHARGE HOSE.
- C. THE BAG SHOULD BE PLACED ON AN AGGREGATE OR HAY BALE BED TO MAXIMIZE WATER FLOW THROUGH THE ENTIRE SURFACE AREA OF THE BAG.
- D. THE FILTER BAG IS FULL WHEN IT NO LONGER CAN EFFICIENTLY FILTER SEDIMENT OR PASS WATER AT A REASONABLE RATE.
- E. FLOW RATES VARY DEPENDING ON THE SIZE OF THE DEWATERING DEVICE, AMOUNT OF SEDIMENT DISCHARGED INTO THE DEWATERING DEVICE, THE TYPE OF GROUND, ROCK, OR OTHER SUBSTANCE UNDER THE BAG AND THE DEGREE OF THE SLOPE ON WHICH THE BAG LIES. THE FILTER BAG SHOULD BE SIZED TO ACCOMMODATE THE ANTICIPATED FLOW RATES FROM THE TYPE OF PUMP USED. TYPICALLY FILTER BAGS CAN HANDLE FLOW RATES OF UP TO 1000 GALLONS PER MINUTE, BUT IN ALL CASES FOLLOW THE MANUFACTURERS RECOMMENDATIONS FOR FLOW RATES.
- F. USE OF EXCESSIVE FLOW RATES OR OVERFILLING THE DEWATERING DEVICE WITH SEDIMENT WILL CAUSE RUPTURES OF THE BAG OR FAILURE OF THE HOSE ATTACHMENT STRAPS.
- G. THE FILTER BAG CAN BE LEFT IN PLACE AFTER CUTTING THE TOP OFF AND SEEDING AND MULCHING THE ACCUMULATED SEDIMENT OR REMOVED AND DISPOSED OF OFFSITE IN AN APPROVED LANDFILL.
- H. EACH STANDARD DEWATERING DEVICE SHALL HAVE A FILL SPOUT LARGE ENOUGH TO ACCOMMODATE THE DISCHARGE HOSE. USE TWO STAINLESS STEEL STRAPS TO SECURE THE HOSE AND PREVENT PUMPED WATER FROM ESCAPING WITHOUT BEING FILTERED.
- I. THE DEWATERING DEVICE SHALL BE A NONWOVEN BAG, WHICH IS SEWN WITH A DOUBLE NEEDLE STITCHING USING A HIGH STRENGTH THREAD.
- J. THE DEWATERING DEVICE SEAMS SHALL HAVE AN AVERAGE WIDE WIDTH STRENGTH PER ASTM D 4884 OF 100 LBIN (1.15 KILOMETER).
- K. THE GEOTEXTILE FABRIC SHALL BE A NONWOVEN FABRIC WITH THE FOLLOWING PROPERTIES:



NOTES:

1. SILT SOCK SHALL MEET STANDARDS OF SECTION 865.2, PENN DOT (THE DEPARTMENT) 408/2003.
2. COMPOST FILTER SOCK SHALL BE PLACED AT EXISTING LEVEL GRADE. BOTH ENDS OF THE BARRIER SHALL BE EXTENDED AT LEAST 8 FEET UP SLOPE AT 45 DEGREES TO THE MAIN BARRIER ALIGNMENT. MAXIMUM SLOPE LENGTH ABOVE ANY BARRIER SHALL NOT EXCEED THAT SPECIFIED FOR THE SIZE OF THE SOCK AND THE SLOPE OF ITS TRIBUTARY AREA.
3. TRAFFIC SHALL NOT BE PERMITTED TO CROSS COMPOST FILTER SOCKS.
4. ACCUMULATED SEDIMENT SHALL BE REMOVED WHEN IT REACHES 1/2 THE ABOVE GROUND HEIGHT OF THE BARRIER AND DISPOSED IN THE MANNER DESCRIBED ELSEWHERE IN THE PLAN.
5. COMPOST FILTER SOCKS SHALL BE INSPECTED WEEKLY AND AFTER EACH RUNOFF EVENT. DAMAGED SOCKS SHALL BE REPAIRED ACCORDING TO MANUFACTURER'S SPECIFICATIONS OR REPLACED WITHIN 24 HOURS OF INSPECTION.
6. BIODEGRADABLE COMPOST FILTER SOCKS SHALL BE REPLACED AFTER 6 MONTHS; PHOTODEGRADABLE SOCKS AFTER 1 YEAR. POLYPROPYLENE SOCKS SHALL BE REPLACED ACCORDING TO MANUFACTURER'S RECOMMENDATIONS.
7. UPON STABILIZATION OF THE AREA TRIBUTARY TO THE SOCK, STAKES SHALL BE REMOVED. THE SOCK MAY BE LEFT IN PLACE AND VEGETATED OR REMOVED. IN THE LATTER CASE, THE MESH SHALL BE CUT OPEN AND THE MULCH SPREAD AS A SOIL SUPPLEMENT.

SS

Lake Rowena Park

Ebensburg, PA  
Cambria County, PA

COMPANY ADDRESS:

LANDSCAPE DESIGNER

PROJECT NAME:

BOROUGH OF  
EBensburg  
LAKE ROWENA  
DOG PARK  
CAMBRIA COUNTY

REV. DATE: DESCRIPTION

DATE: 1-27-2022

PROJECT NO. EBG-01

SCALE: N/A

DRAWN BY: Dave Petrosky, RLA

E & S Comments addressed

2-7-2022

Revision Set 1-12-23

EROSION AND  
SEDIMENTATION  
CONTROL DETAILS

S3.01

CUBIC YARDS OF TOPSOIL REQUIRED FOR APPLICATION AT VARIOUS DEPTHS

DEPTH (in)	PER 1,000 SQUARE FEET	PER ACRE
1	3.1	134
2	6.2	268
3	9.3	403
4	12.4	537
5	15.5	672
6	18.6	806
7	21.7	940
8	24.8	1,074

GRADED AREAS SHOULD BE SCARIFIED OR OTHERWISE LOOSENEED TO A DEPTH OF 3 TO 5 INCHES TO PERMIT BONDING OF THE TOPSOIL TO THE SURFACE AREAS AND TO PROVIDE A ROUGHENED SURFACE TO PREVENT TOPSOIL FROM SLIDING DOWN SLOPE.

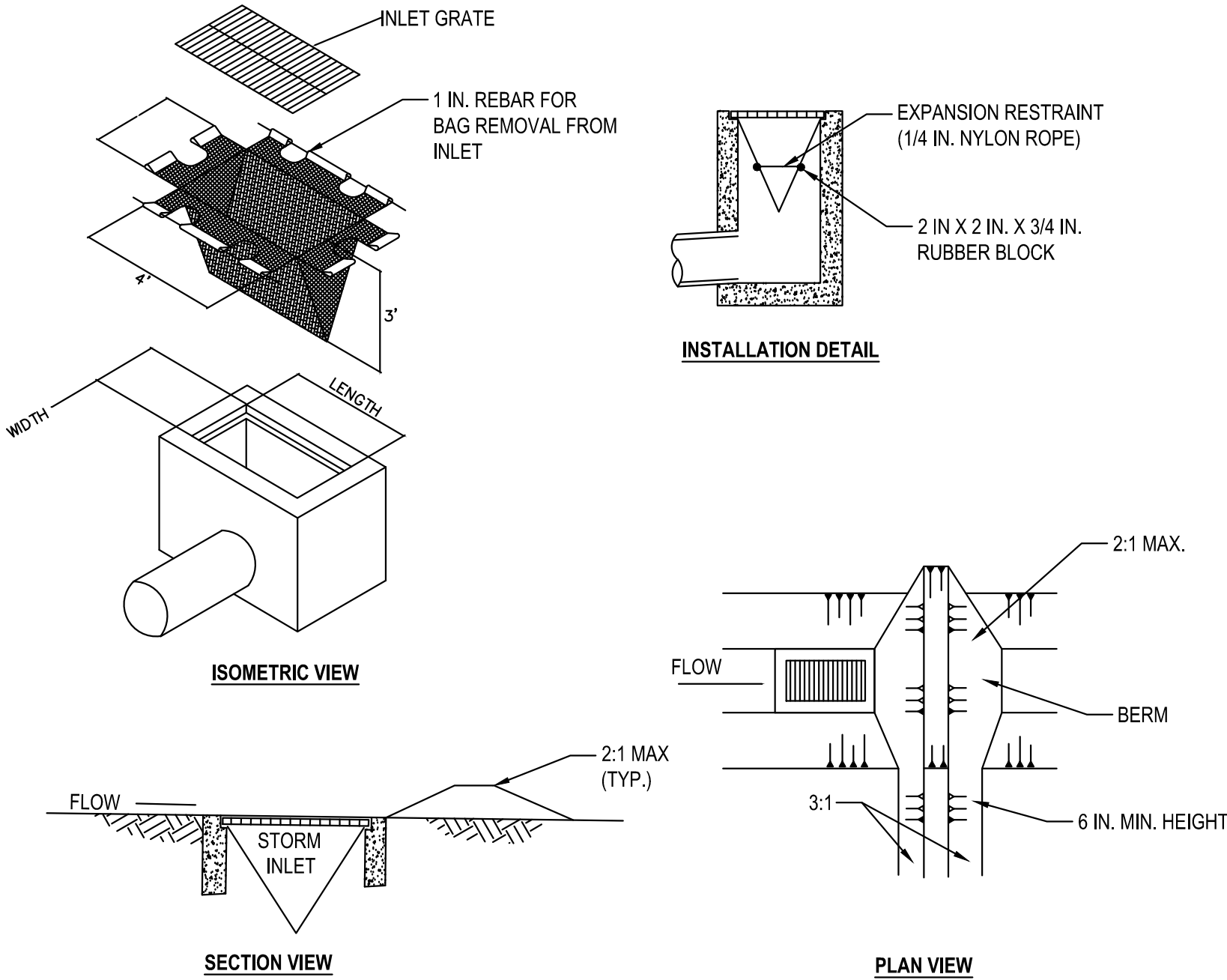
TOPSOIL SHOULD BE UNIFORMLY DISTRIBUTED ACROSS THE DISTURBED AREA TO A DEPTH OF 4 TO 6 INCHES MINIMUM. SPREADING SHOULD BE DONE IN SUCH A MANNER THAT SODDING OR SEEDING CAN PROCEED WITH A MINIMUM OF ADDITIONAL PREPARATION OR TILLAGE. IRREGULARITIES IN THE SURFACE RESULTING FROM TOPSOIL PLACEMENT SHOULD BE CORRECTED IN ORDER TO PREVENT FORMATION OF DEPRESSIONS UNLESS SUCH DEPRESSIONS ARE PART OF THE PCSM PLAN.

TOPSOIL SHOULD NOT BE PLACED WHILE THE TOPSOIL OR SUBSOIL IS IN A FROZEN OR MUDDY CONDITION, WHEN THE SUBSOIL IS EXCESSIVELY WET, OR IN A CONDITION THAT MAY OTHERWISE BE DETRIMENTAL TO PROPER GRADING AND SEED BED PREPARATION. COMPACTED SOILS SHOULD BE SCARIFIED 6 TO 12 INCHES ALONG CONTOUR WHEREVER POSSIBLE PRIOR TO SEEDING.

TOPSOIL APPLICATION NOTES

DISTURBED SOILS								
SYMBOL	NAME	SLOPE (%)	DRAINAGE CLASS	DEPTH TO BEDROCK	DEPTH TO SEASONAL HIGH W20 TABLE (Ft)	PERMEABILITY (N/HR)	CAPABILITY SUB CLASS	HYDROLOGIC SOIL GROUP
Wob	Whorton silt loam	3-8 %	Mod. Well Drained	>48"	16-36"	0.6-2.0	III	e
BTB	Brinkerton Soils	3-8 %	Poorly Drained	>60"	0-0.5"	0.6-2.0	III	e
SPECIAL NOTES								
THE LIMITATIONS FOR THE ABOVE SOILS INCLUDE LIMITATIONS THAT REDUCE THE CHOICE OF PLANTS THAT CAN BE USED AND COMMERCIAL CROP PRODUCTION. SEE BELOW FOR SPECIFIC LIMITATIONS. THESE LIMITATIONS WILL BE OVERCOME BY IMPLEMENTING A PROPER PLANTING PLAN FOR THE SOILS LOCATED ON SITE OR USE AN AMENDED SOIL MIX IF NEEDED. NO NEW PLANTINGS PLANNED AT THE TIME OF THIS PLAN.								
CAPABILITY/SUBCLASS CLASSIFICATION								
III -SOILS HAVE SEVERE LIMITATIONS THAT REDUCE THE CHOICE OF PLANTS OR THAT REQUIRE SPECIAL CONSERVATION PRACTICES OR BOTH								
IV -SOILS HAVE VERY SEVERE LIMITATIONS THAT REDUCE THE CHOICE OF PLANTS OR THAT REQUIRE SPECIAL CONSERVATION PRACTICES OR BOTH								
e = Main risk is erosion III = Main risk is SEVERE WETNESS AND FROST ACTION								
GENERAL NOTES								
THE ABOVE SOILS INFORMATION IS PROVIDED FROM THE NRCS WEB SOIL SURVEY AS GENERAL INFORMATION ONLY. IT IS THE RESPONSIBILITY OF THE CONTRACTOR TO FIELD VERIFY ACTUAL SITE CONDITION.								
ADDITIONAL LIMITATION NOTES								
SYMBOL	LIMITATIONS	LIMITATIONS RESOLUTION						
Wob	CORROSIVE TO UNCOATED STEEL	ALL SLOPES ARE 3-8% /LESS THAN MAX. DISTURBED AREAS IN WHICH WORK CEASES FOR A PERIOD OF 4 DAYS SHALL BE STABILIZED. THE DRAINAGE AND APPLICABLE UTILITIES SHALL BE INSTALLED BELOW THE FROST LINE. THE DISTURBED AREAS SHALL BE STABILIZED IN A TIMELY MANNER TO LIMIT EROSION.						
III	CONCRETE, DEPTH TO SATURATED ZONE/SEASON HIGH WATER TABLE, HYDROIC INCLUSIONS, LOW STRENGTH, SLOW PERCOLATION, POOR SOURCE OF TOPSOIL, HIGH FROST ACTION, SHRINK SWELL POTENTIAL, WETNESS,	ALL UNDERGROUND CONCRETE AND STEEL FEATURES SHALL HAVE A PROTECTIVE LAYER OF LIMESTONE BETWEEN THE STRUCTURE AND THE SOIL TO PREVENT CORROSION IF REQUIRED BY THE GEOTECHNICAL ENGINEER. THE CONTRACTOR SHALL IMPLEMENT, AT ALL TIMES, ALL APPLICABLE OSHA STANDARDS AND REGULATIONS TO SAFEGUARD WORKERS. CONTRACTOR SHALL STRIP AND STORE TOP SOIL ONSITE FOR FINAL GRADING PURPOSES.						
BTB	CORROSIVE TO UNCOATED STEEL	ALL SLOPES ARE 3-8% /LESS THAN MAX. DISTURBED AREAS IN WHICH WORK CEASES FOR A PERIOD OF 4 DAYS SHALL BE STABILIZED. THE DRAINAGE AND APPLICABLE UTILITIES SHALL BE INSTALLED BELOW THE FROST LINE. THE DISTURBED AREAS SHALL BE STABILIZED IN A TIMELY MANNER TO LIMIT EROSION.						
e	CONCRETE, DEPTH TO SATURATED ZONE/SEASON HIGH WATER TABLE, HYDROIC INCLUSIONS, LOW STRENGTH, SLOW PERCOLATION, POOR SOURCE OF TOPSOIL, HIGH FROST ACTION,MOD.SHRINK/SWELL POTENTIAL , SEVERE WETNESS & EROSION	ALL UNDERGROUND CONCRETE AND STEEL FEATURES SHALL HAVE A PROTECTIVE LAYER OF LIMESTONE BETWEEN THE STRUCTURE AND THE SOIL TO PREVENT CORROSION IF REQUIRED BY THE GEOTECHNICAL ENGINEER. THE CONTRACTOR SHALL IMPLEMENT, AT ALL TIMES, ALL APPLICABLE OSHA STANDARDS AND REGULATIONS TO SAFEGUARD WORKERS. CONTRACTOR SHALL STRIP AND STORE TOP SOIL ONSITE FOR FINAL GRADING PURPOSES.						

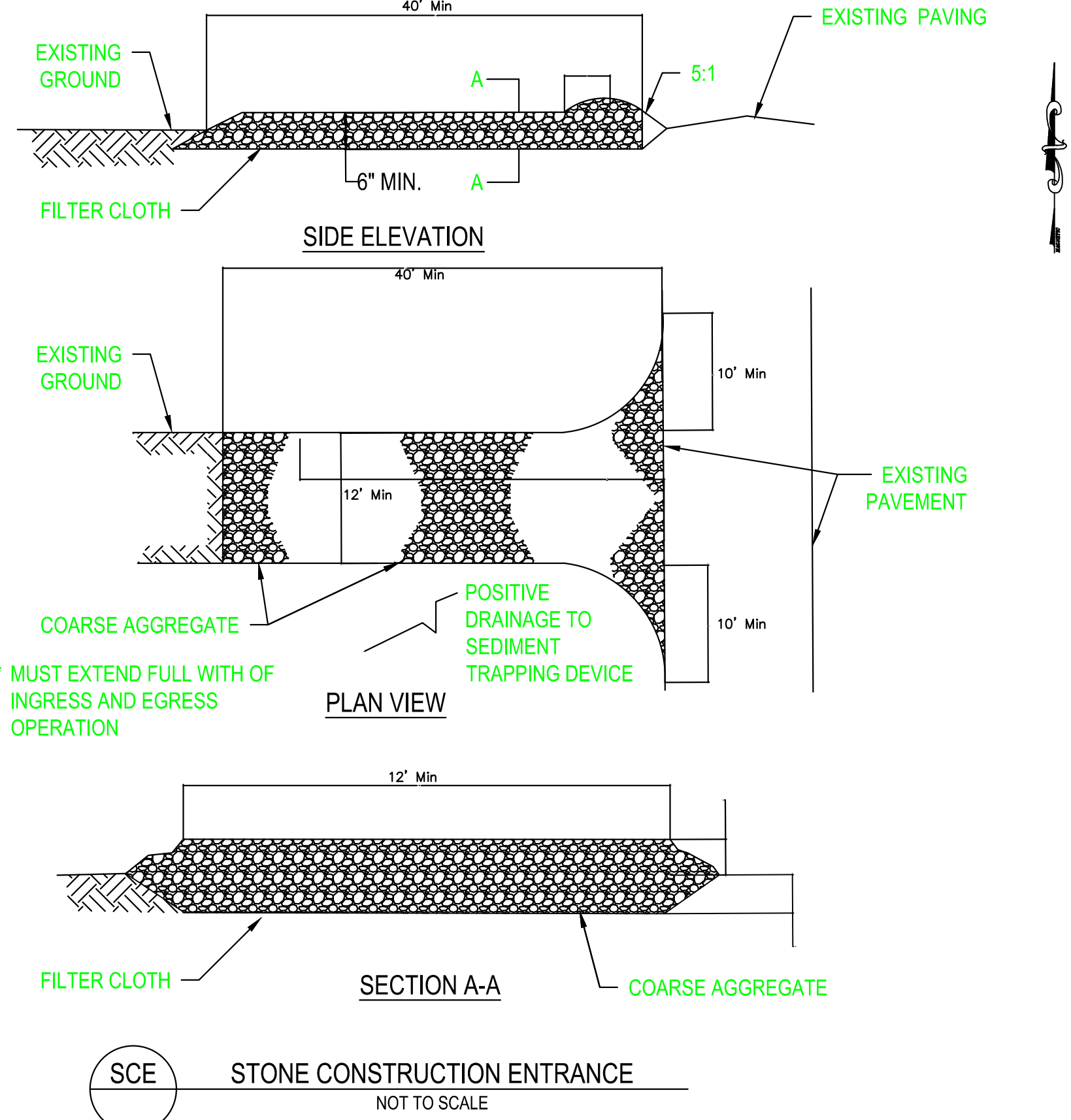
SOIL TYPES TABLE DETAIL



INLET FILTER BAG PROTECTION NOTES:

1. MAXIMUM DRAINAGE AREA = 1/2 ACRE.
2. INLET PROTECTION SHALL NOT BE REQUIRED FOR INLET TRIBUTARY TO SEDIMENT BASIN OR TRAP. BERMS SHALL BE REQUIRED FOR ALL INSTALLATIONS.
3. ROLLED EARTHEN BERM IN ROADWAY SHALL BE MAINTAINED UNTIL ROADWAY IS STONED. ROAD SUBBASE BERM ON ROADWAY SHALL BE MAINTAINED UNTIL ROADWAY IS PAVED. EARTHEN BERM IN CHANNEL SHALL BE MAINTAINED UNTIL PERMANENT STABILIZATION IS COMPLETED OR REMAIN PERMANENTLY.
4. AT A MINIMUM, THE FABRIC SHALL HAVE A MINIMUM GRAB TENSILE STRENGTH OF 120 LBS. A MINIMUM BURST STRENGTH OF 200 PSI, AND A MINIMUM TRAPEZOIDAL TEAR STRENGTH OF 50 LBS. FILTER BAGS SHALL BE CAPABLE OF TRAPPING ALL PARTICLES NOT PASSING A NO. 40 SIEVE.
5. INLET FILTER BAGS SHALL BE INSPECTED ON A WEEKLY BASIS AND AFTER EACH RUNOFF EVENT. BAGS SHALL BE EMPTIED AND RINSED OR REPLACED WHEN HALF FULL OR WHEN FLOW CAPACITY HAS BEEN REDUCED SO AS TO CAUSE FLOODING OR BYPASSING OF THE INLET. DAMAGED OR CLOGGED BAGS SHALL BE REPLACED. A SUPPLY SHALL BE MAINTAINED ON SITE FOR REPLACEMENT OF BAGS. ALL NEEDED REPAIRS SHALL BE INITIATED IMMEDIATELY AFTER THE INSPECTION. DISPOSE ACCUMULATED SEDIMENT AS WELL AS ALL USED BAGS ACCORDING TO THE PLAN NOTES.
6. DO NOT USE ON MAJOR PAVED ROADWAYS WHERE PONDING MAY CAUSE TRAFFIC HAZARDS.

IFB INLET FILTER BAG PROTECTION DETAIL NOT TO SCALE TO BE USED IN EXISTING INLET STRUCTURE



SEEDING AND MULCHING NOTES

MULCHING NOTES

1. STRAW SHALL BE UNROTTED, SMALL GRAIN FREE OF ALL KINDS OF WEEDS AND PROHIBITIVE NOXIOUS WEEDS SUCH AS: THISTLES, JOHNSONGRASS AND QUACKGRASS.
2. WOOD CELLULOSE SHALL BE GREEN DYED AND AIR-DRIED WOOD CELLULOUS FIBERS, CONTAINING NO GROWTH OR GERMINATION INHIBITING SUBSTANCES, IN PACKAGES NOT EXCEEDING ONE HUNDRED POUNDS NET WEIGHT SHOWN ON PACKAGE AND MEETING THE FOLLOWING:
  - A. MOISTURE CONTENT: 14% +/- 3%
  - B. ORGANIC MATTER (OVEN DRIED BASIS):98.6+/- 0.2%
  - C. ASH CONTENT: 1.4% +/- 0.2%
  - D. WATER HOLDING CAPACITY: 1000% MINIMUM
3. SHREDDED BARK SHALL BE SUITABLE FIBROUS GROUND, SHREDDED OR CHUNKS, AGED HARDWOOD BARK, FREE FROM VIABLE, NOXIOUS WEED SEEDS AND INSECT LIFE NOT DECOMPOSED AND BETWEEN 1/4" AND 2" IN DIMENSION
4. EMULSIFIED ASPHALT SHALL COMFORM TO PADOT STANDARDS CONTAINING NO SOLVENTS OR DILUTING AGENTS TOXIC TO PLANT LIFE AND NOT MORE THAN 0.75% OF SAPONIFIABLE ACIDS.
5. CUTBACK ASPHALT SHALL COMFORM TO PADOT STANDARDS.
6. NON ASPHALTIC EMULSION SHALL BE NATURAL VEGETABLE GUM BLENDED WITH JELLING AND HARDENING AGENTS (TERRA TACK AR) AS MANUFACTURED BY GRASS GROWERS COMPANY OR EQUAL.
7. OTHER MULCH BINDERS AS APPROVED BY THE PADEP BUREAU OF LAND AND WATER CONSERVATION.
8. SEEDING AND MULCHING WILL OCCUR AFTER ANY EARTH DISTURBANCE THAT WILL NOT BE DISTURBED AFTER 4 DAYS.

Lake Rowena Park

Ebensburg, PA  
Cambria County, PA  
COMPANY ADDRESS:

LANDSCAPE DESIGNER

PROJECT NAME:

BOROUGH OF EBENSBURG  
LAKE ROWENA DOG PARK  
CAMBRIA COUNTY

REV. DATE: DESCRIPTION

DATE: 1-27-2022  
PROJECT NO. EBG- 01  
SCALE: 1"= 20'  
DRAWN BY: Dave Petrosky, RLA

Revised Set 1-12-23

EROSION AND SEDIMENTATION CONTROL DETAILS 2

S3.02